

Climate Change



Global temperatures are rising

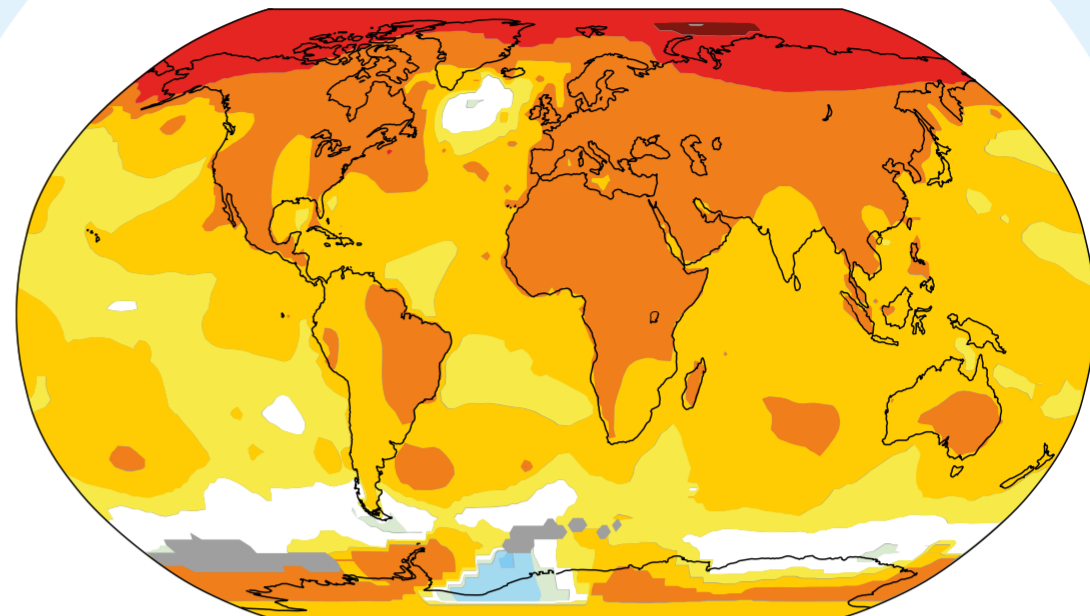
Increasing **1.1 °C** since 1900. Global temperatures in 2015-2021 are the warmest on record.



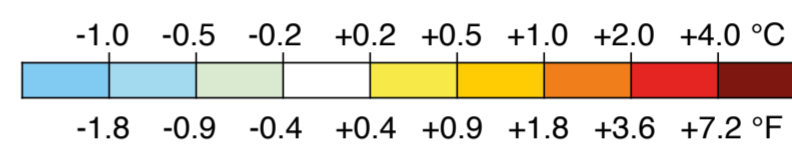
The Arctic is warming **3-4 times faster** than the rest of the Globe

Three IPCC Climate Change scenarios and their prediction of global, arctic and arctic winter temperatures. ↓

Temperature change in the last 50 years.

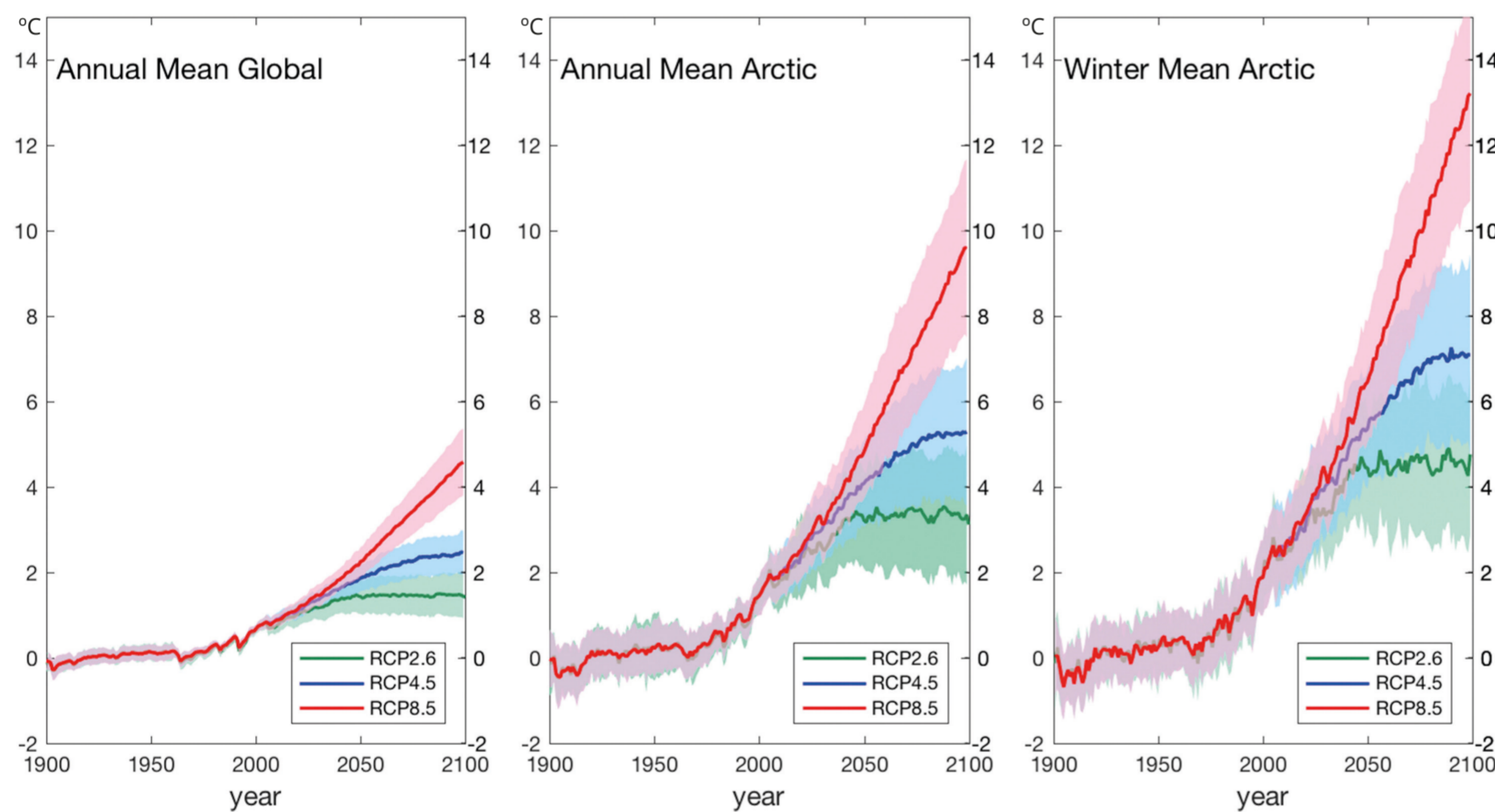


2011-2021 average vs 1956-1976 baseline.



Predicted temperature increase Year 2000-2100

before 2080



RCP 8.5 'Business as usual':

Mean global temperature: +4 °C
Mean Arctic temperature: +8 °C
Mean Arctic winter temperature: +11 °C

RCP 4.5 'Current reduction commitments':

Mean global temperature: +2 °C
Mean Arctic temperature: +4 °C
Mean Arctic winter temperature: +6 °C

RCP 2.6 'Change to negative emissions':

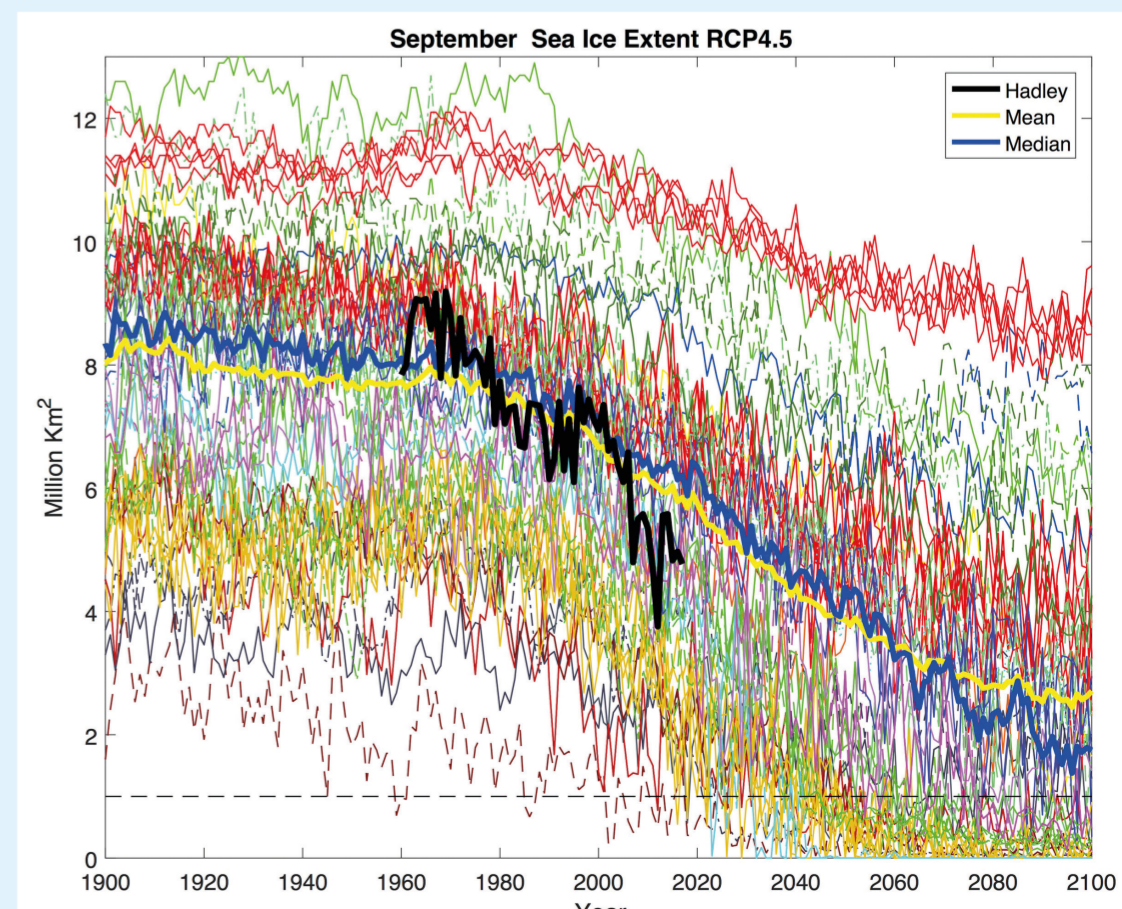
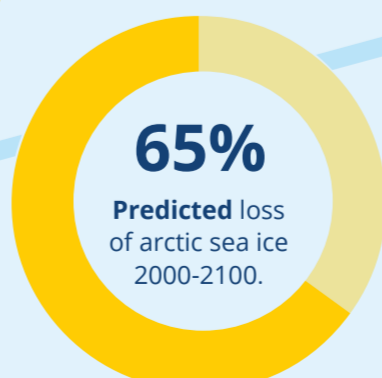
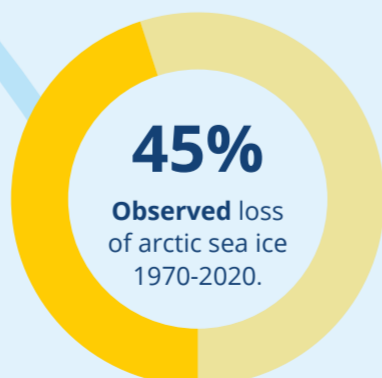
Mean global temperature: +1 °C
Mean Arctic temperature: +2 °C
Mean Arctic winter temperature: +3 °C

* Commitments that we are currently not on track to fulfil.



Summer sea-ice extent is diminishing

Predictions by 36 models – 'current reduction commitments'.*



Yellow – average of 36 models.

Black – observed sea ice extent from satellite (not model).