

Integrating Activities for Advanced Communities



D1.18 – INTERACT bi-annual Newsletter 9

Project No.871120– INTERACT

H2020-INFRAIA-2019-1

Start date of project: 2020/01/01  
Due date of deliverable: 2024/05/31

Duration: 60 months  
Actual Submission date: 2024/05/24

Lead partner for deliverable: Lund University  
Authors: Katharina Beckmann and Margareta Johansson

Dissemination Level		
PU	Public	X
PP	Restricted to other programme participants (including the Commission Services)	
RE	Restricted to a group specified by the Consortium (including the Commission Services)	
CO	Confidential, only for members of the Consortium (including the Commission Services)	

**Publishable Executive Summary ..... 3**  
**1. INTERACT III - Newsletter 9.....**

---

## Publishable Executive Summary

The ninth INTERACT newsletter presents exciting updates from the project from December last year until today. It presents highlights such as the INTERACT participation at an EU/US meeting in Washing where the global importance of Arctic science and research and how the US and EU scientific communities can improve cooperation to build bridges of understanding were discussed. The newsletter also presents the INTERACT paper which was published in Nature Climate Change on the increasing biased view on the Arctic as a result of the Russian invasion of Ukraine. The newsletter also highlights some examples of the many outreach events that have been arranged with the two film series that INTERACT has produced; the Northwards and the Changing Global Arctic. Furthermore, the film series Northwards will be broadcasted on RAI (National Italian TV) and will also be available on their on-demand tv. A new book in the INTERACT series have been published, this time it is a guidebook on Reducing Plastic Consumption and Pollution at Arctic Research Stations which is an increasing challenge in the Arctic. Finally, news from the stations and from the INTERACT non-profit association have been presented.



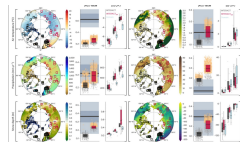
# INTERACT NEWSLETTER

INTERACT III NEWSLETTER #9 MAY 2024

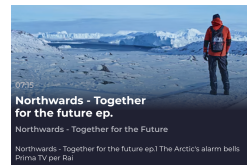
## Top stories in this newsletter



**INTERACT in EU/US  
expert panel**



**Increasingly Biased  
View on Arctic  
Change**



**INTERACT on RAI on  
demand TV**

## INTERACT in Expert Panel EU-US Arctic Cooperation

INTERACT was invited to an expert panel at the Woodrow Wilson Center to discuss the global importance of Arctic science and research, how science diplomacy supports the safety and stability of Arctic regions, and how the US and EU scientific communities can improve cooperation to build bridges of understanding in a world moving towards strategic competition. See the recordings of the meeting [here](#).

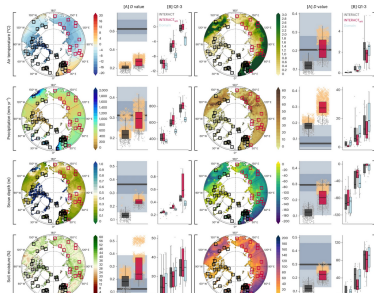


## INTERACT in Open Access Government

A feature by INTERACT is published in Open Access Government. The article is about the importance of science not being locked inside university walls and how INTERACT bridge the gap between researchers and the public. Read the full piece [here](#).

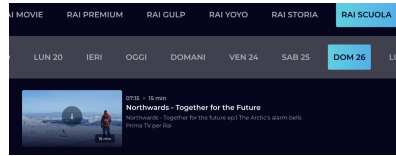
## Towards an Increasingly Biased View on Arctic Change - Paper in Nature Climate Change

As the Russian invasion of Ukraine continues, the resulting geopolitical tensions may impact our ability to understand ongoing Arctic change. A recent study published in Nature Climate Change by INTERACT sheds light on the potential implications that such prolonged conflict may have on our current (and future) perspective over





one of the world's most sensitive and dynamically changing regions. *Ref: López-Blanco, E et al., 2024. Towards an increasingly biased view on Arctic change. Nature Climate Change*



## INTERACT on RAI on demand TV

INTERACT's successful docuseries *Northwards* is now on Italian National TV Channel RAI. The 7 episodes (in English, with Italian subtitles) will be broadcast worldwide at 7:15 AM CET, one episode per day, from Sunday 26th May to Friday 1st June, which happens to be the same week of the INPA GA.

Watch the 1st episode [here](#).

## INTERACT Kiruna's Snow Festival

INTERACT arranged together with Kiruna Lappland (an umbrella organization for the tourism industry in Kiruna) a film event for the public where the *Changing Global Arctic* series were shown followed by a panel debate discussing what this means for Kiruna and how the different actors can work together towards a sustainable future. The participants in the panel were from Svenska Samernas Riksförbund (The National Association of the Sámi People), tourism industry, the Kiruna municipality and LKAB (the mining company).



## Northwards at the annual festival Di Freisa in Italy

The INTERACT docu-series "Northwards – together for the future" was the opening event at the annual festival Di Freisa in Freisa the 17th May. Screened at Chieri's biggest cinema, the event was also honoured by two special guests, Terry Callaghan, founder of INTERACT, and Giorgio Lupano, leading actor in the series. The cinema was full - 250 people enjoying watching *Northwards* and asking questions about the Arctic environment and the climate change impact. Many thanks to the "Consorzio Freisa Chieri" for inviting INTERACT to this amazing event.



## New subtitles available for the Changing Global Arctic

To engage a wider public, the *Changing Global Arctic* is now available with different subtitles, starting with Polish and Swedish (just choose language from the settings in the YouTube player). You find them on INTERACT's YouTube channel in the playlist for [The Changing Global Arctic](#).





## Successful INTERACT TA Call

We are pleased to announce that INTERACT will support 43 research projects this year, providing access to 30 of the [INTERACT stations](#) for a total amount of 1358 user-days.

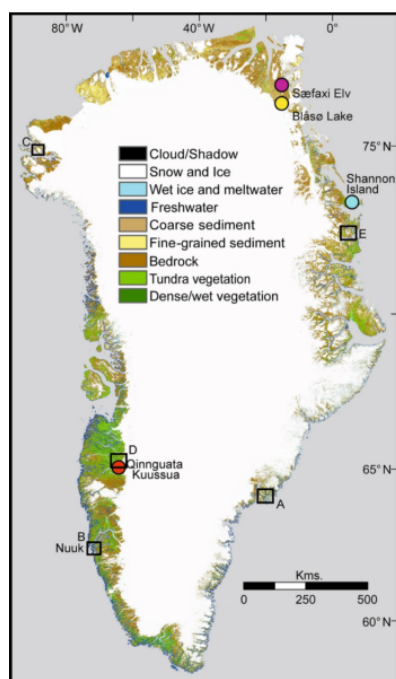
The successful applicants are already busy arranging their access visits or Remote Access to the stations, and there was also an active participation to a webinar arranged for the TA Users as part of the INTERACT TA User Community activities on the 25th of April. All project descriptions of the INTERACT Transnational Access supported projects will be published on [this page](#) as the field season progresses.

Stay tuned! We are looking forward to a productive INTERACT field season!

## INTERACT at ASSW

This year, INTERACT organised a well-visited session called *How well do we understand change throughout the Arctic and what impact is the war in Ukraine having on this?* at the Arctic Science Summit Week in Edinburgh, UK.

In addition, INTERACT had three booths where visitors took the chance to watch the INTERACT docu-series, secure their copies of their favourite INTERACT publications and could find out all they ever wanted to know about INTERACT.



## INTERACT TA visit results published in Nature's Scientific Reports

An INTERACT TA user group has been working on land cover changes in Greenland and identified that there has been a doubling of vegetation in only three decades. The results are published in Nature's Scientific Reports and the full article can be read [here](#).

## Kevo Research Station

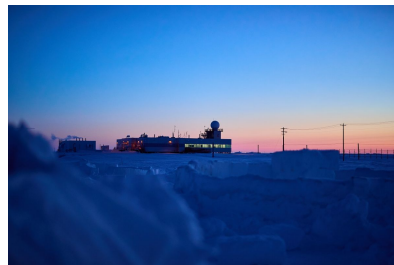
The laboratory building of Kevo research station, originating from 1974, is under a complete renovation and modernization. The renovation is expected to be finished by the end of November 2024. Unfortunately, this means that the station's capacity to support research and courses (even the lecture hall is this building) during 2024 field season is limited, even though the staff will try all their best to enable as much working possibilities as possible by temporary solutions and spaces.

*Photo: Ilkka Syv  np  r  *



## Uapishka Station

In 2023, the Uapishka Station completed the installation of various meteorological measurement equipment in the Uapishka mountains to study climate change effects. The collected data will be accessible to all researchers via OpenAccess (as well as in INTERACT GIS) to facilitate further research. Among the equipment installed, a meteorological station located in the interface zone between closed forest and alpine tundra will monitor forest dynamics in relation to altitude variations. A standardized meteorological station has been installed in the forest zone to improve meteorological understanding and climate projection models. Furthermore, two snow cover measurement stations were deployed in the alpine and subalpine regions. This emphasizes collaborative efforts and data accessibility for the scientific community.



## Barrow Arctic Research Center

The Barrow Arctic Research Center in Utqia  vik, Alaska and operated by UIC Science is concluding a very busy winter and spring with a wide variety of visitors including sea ice and permafrost researchers, arctic survival courses, film documentaries, and student groups. UIC Science continues to expand and upgrade their support with new snowmachines and 4-wheelers in preparation for the upcoming research programs.



## Ny-  lesund Research Station

Ny-  lesund research station is the world's northernmost year-round research station, and hosts and facilitates for research and long-term environmental monitoring.

Research in Ny-  lesund is carried out through institutional, national or international programmes. Four flagship programmes have been set up to promote collaboration and coordination in the following domains: atmosphere, terrestrial ecosystems, the Kongsfjorden system (marine research), and glaciology.

The ambitions for the future development of Ny-  lesund Research Station are outlined in a research strategy developed by the Research Council of Norway. The Norwegian Polar Institute has been tasked with implementing the strategy, and with acting as the official host in Ny-  lesund.

## INTERACT Non-Profit Association (INPA)

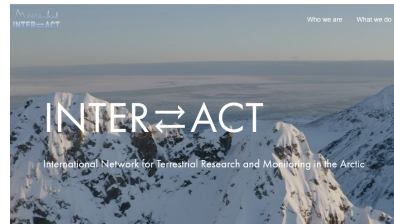
### Updates from INPA

As you may very well know, INPA (INTERACT Non-Profit Association) is an organisation, which aspires to provide a long term sustainable platform to carry forward the legacy of INTERACT. In March, the new [website](https://interactassociation.org) was launched: [interactassociation.org](https://interactassociation.org)

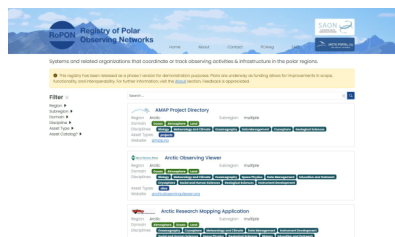
INPA is holding its third General Assembly in May, where day-to-day coordination, networking, access, education and outreach, projects, and fundraising can be discussed.

INPA is currently partner in four EU projects, Arctic PASSION, eRImote, POLARIN, and AQUARIUS.

INPA's latest newsletter can be read [here](#).



## milestones & deliverables



### Deliverable from Work Package 2

Research stations are knowledge hubs and INTERACT promotes implementation of standardised measurements across the network. INTERACT III therefore included a task to identify and promote standardised information about scientific organisations, programmes and projects and networks. Now Work Package 2 has produced a [deliverable report on metadata standards for scientific networks and pollution](#).

The Station Managers' Forum has also produced a guidebook on Reducing Plastic Consumption and Pollution at Arctic Research Stations that is just fresh off the printers. Please find the new guidebook on our web site for download [here](#).







## Deliverable from Work Package 7

Work Package 7 (Preparing for a future world: improving education and awareness at all societal levels) has submitted a deliverable report on educational toolkits and one on online lessons. The first report provides an overview of educational materials, which were produced specifically by INTERACT in order to enhance literacy of the Arctic and Arctic Observations among teachers and students. The toolkits are available online.

The second report presents a general overview of conducted lessons: thematic areas, and number of conducted lessons. There were 70 lessons in total, conducted mainly in English (49) and some in Polish (21) with 176 participating groups.

## INTERACT's Presence in Social Media

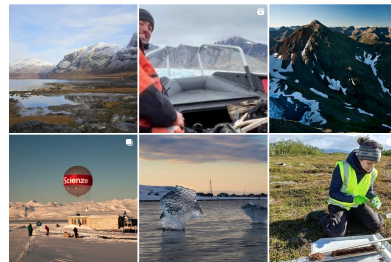
Stay tuned in between the newsletters by following INTERACT on your favourite social media channel.

**Facebook:** [facebook.com/InteractArctic](https://facebook.com/InteractArctic)

**Instagram:** [instagram.com/eu\\_interact/](https://instagram.com/eu_interact/)

**Twitter (X):** [twitter.com/INTERACT66](https://twitter.com/INTERACT66)

**LinkedIn:** [linkedin.com/company/eu-interact/](https://linkedin.com/company/eu-interact/)



[View this email in your browser](#)

Copyright © 2024 \*|INTERACT|\*, All rights reserved.

**Our mailing address is:**

\*|katharina.beckmann@nateko.lu.se|\*

Want to change how you receive these emails?

You can [update your preferences](#) or [unsubscribe from this list](#).