

WP 9 The Arctic Resort

Niklas Labba
JNL

Aim of WP 9



Increasing benefits
and reducing impacts
from
developing Arctic tourism



WP 9.1 Educating the tourists and Tour operators´



WP 9.1 Lead partner for deliverable: AECO

Author: Melissa Nacke

Due date of deliverable: 2022/12/31

The objective is to develop a template for Station Specific Tourism Guidelines, together with instructions on how to use this template

<https://eu-interact.org/tourism/>



WP 9.2 Reviewing existing tourism policies and regulations from an Indigenous and local Peoples' perspective



WP 9.2 Lead partner for deliverable: JNL

Author: Niklas Labba

Due date of deliverable: 2023/04/30

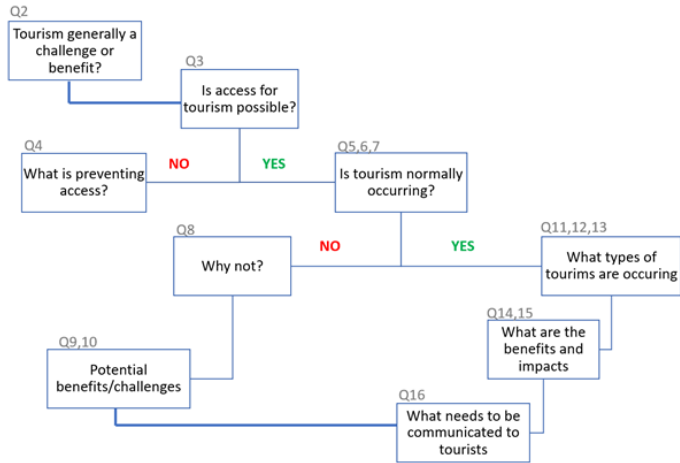
The objective is to work together with Sámi Peoples to review, summarize and if needed suggest revisions of policies and regulations. The objective is also to develop Sámi guidelines for tourists.

<https://eu-interact.org/tourism/>

Progress made during the project

9.1 Station Specific Tourism Guidelines

<https://www.aeco.no/research-station-guidelines/>



9.2 Sámi Tourism Guidelines

<https://www.samigeaidnu.com/>





WP 9.2 Suggest revisions of policies and regulations

Policy makers

National level

- Sweden and Finland should ratify the ILO Convention no. 169 on Indigenous and Tribal People (ILO 169).

Regional level

- Develop methods to enable checks on compliance with laws that prevent grazing reindeer from being disturbed.

Municipality level

- Take measures to raise awareness to overcome negative attitude and racism towards Sámi People.

Tour operators´

- Together with the Sámi communities develop education modules for guides, service personal and managers.

Sámi communities

- Built capacity to;
 - develop community-based guidelines and land use plans.
 - develop collaboration with research stations and tour operators´
 - Develop briefings for decision makers and films to influence society

Ways forward

What did we learn from WP 9	What do we need	For whom
We need to increase the focus on positive and negative effects from tourism in Arctic areas	Bridge knowledge gaps between indigenous communities, research stations, and tour operators'	<ul style="list-style-type: none"> • Indigenous people • Researchers • Policymakers • Educators • Tour operators'
There is a need to share "on-time" information between research stations, indigenous communities and tourists/ tour guides	"On- time" Arctic Tourism Risk Assessment Tool	<ul style="list-style-type: none"> • Indigenous people • Researchers • Policymakers • Educators • Tourists • Tour operators'
The "green change" will effect tour operators' and tourist behaviour	The Support from indigenous communities and research stations, to assist the development of an ecological and economically sustainable "Knowledge based" tourism	<ul style="list-style-type: none"> • Indigenous communities • Research stations • Tourists • Tour operators'



Collaboration is the Way forward!



[Who we are](#) [Where we work](#) [Members](#) [What we do](#) [News](#) [How we work](#) [Search](#) [Facebook](#) [Twitter](#) [Instagram](#)

[Partner up with INPA](#) [Support/Donate](#) [Adopt](#) [Membership](#)



A network of Arctic research stations

Non-profit Association





Giitu mu ovttas!