



INPA

INTERACT Non-Profit Association

Dr Caroline Coch
INPA Senior Project Manager



Your chance to give input

Go to: www.menti.com

Enter the Code: **7388 4807**

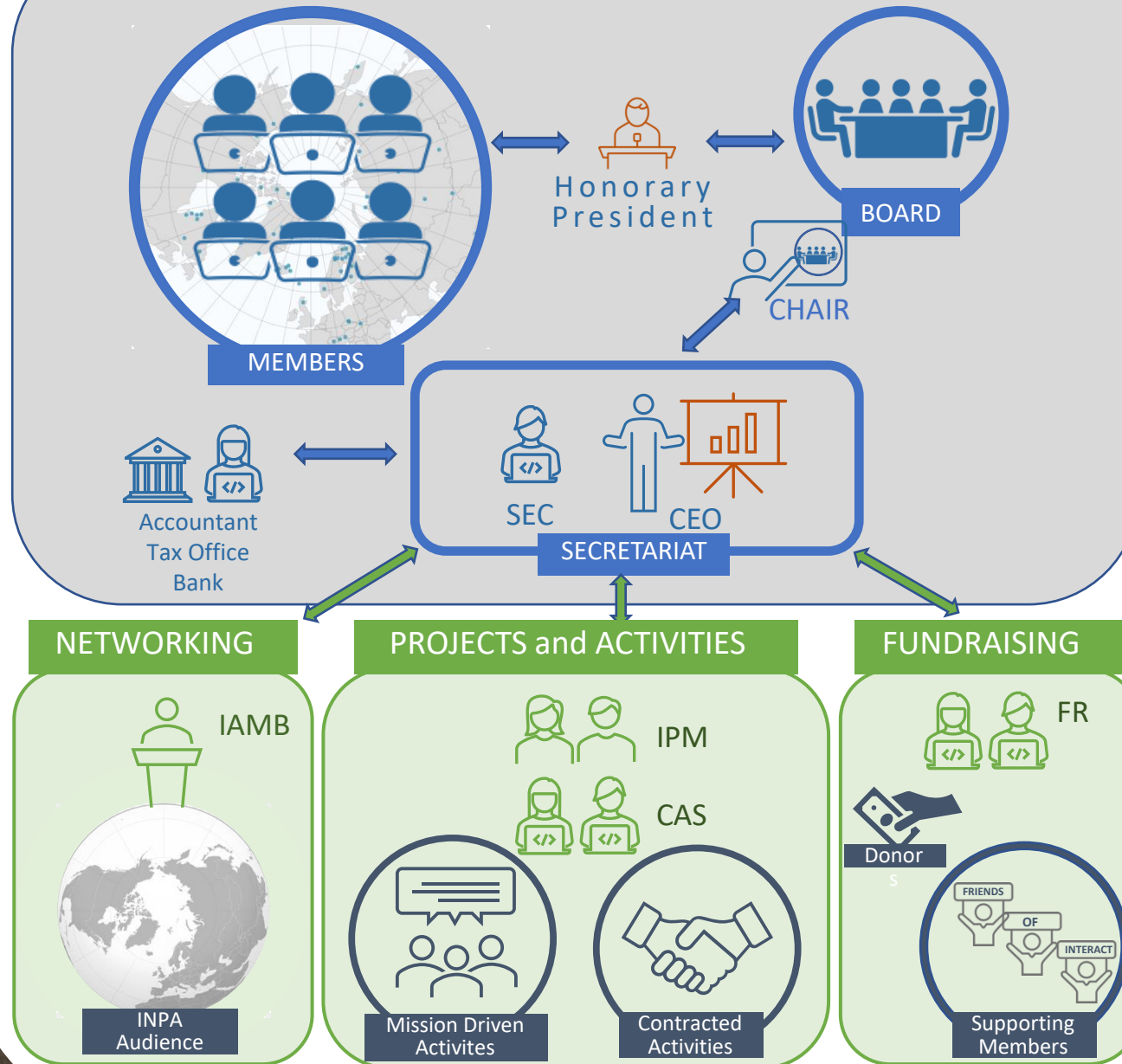


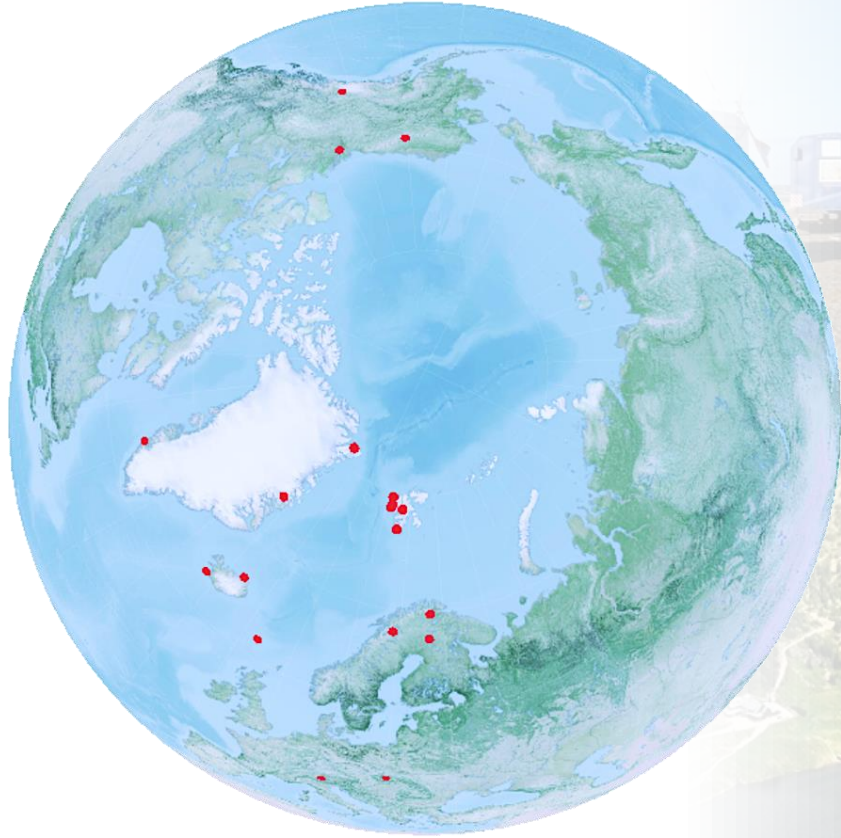
The purpose of INPA is to support the use and operational procedures of infrastructures in Arctic, sub-Arctic, boreal and alpine regions, to support research and scientific development in the field of climate change and environment, and to increase general awareness about these topics within the general public and among politicians and decision makers.

Our Mission



OPERATIONAL ROLES





**19 Research Stations
and expanding...**

VILLUM - Villum Research Station	Greenland
FINI - Faroe Islands Nature Investigation	Faroe Islands
HORNSUND - Polish Polar Station Hornsund	Svalbard, Norway
SUDURNES - Sudurnes Science and Learning Center	Iceland
RIF - Rif Field Station	Iceland
WARC - Western Arctic Research Centre	Canada
PAL-SOD - Sodankylä-Pallas	Finland
NLAS - Netherlands Arctic Station	Svalbard, Norway
MMK-TATRA - M&M Kłapa Research Station of IGSO PAS	Poland
NCU-PS - Nicolaus Copernicus University Polar Station	Poland
TRS - Tarfala Research Station	Sweden
GINR - Greenland Institute of Natural Resources	Greenland
AMUPS - Adam Mickiewicz University Polar Station "Petuniabukta"	Poland
ST-HE - Station Hintereis	Austria
AWIPEV	Svalbard, Norway
TOOLIK - Toolik Field Station	Alaska, USA
KLRS - Kluane Lake Research Station	Canada
KEVO - Kevo Subarctic Research Institute	Finland
ZAC - Zackenberg	Greenland

Activities in 2022

Day to Day Coordination Activities

e.g. member and
staff recruiting,
networking &
comms,
fundraising

Mission Driven Activities


ambassador
activities,
increasing public
awareness on
Arctic issues &
importance of
INPA, translation
of INTERACT
publications,
proposal writing

Contracted Activities

Arctic PASSION,
eRImote

Mission Evolution Activities

consultancies,
proposal on Black
Carbon in the
Arctic,
transnational
access,
development of
INPA “service
menu”



Support the
sustainable long term
commitment to
INTERACT roles

Sharing of knowledge,
experience and best
practices for operating
research stations

Top reasons to join INPA

Your say in the
development and
operation of INPA

Participation in new
funding applications
and activities

How to Become a Member

More info:

INPA website (www.interactassociation.org)

Speak to us 😊

E-Mail: info@interactassociation.org



How to join

1. Fill out the [Google Form](#)
2. Your Application will be processed by the INPA Board
3. You will get a membership notification



Costs

Starting membership fee is 200 €. The Annual Fee will be defined by the Station Members during the General Assembly. Renewal is year by year.

UPDATES



Arctic PASSION

- Overall aim: co-creation and implementation of the 'Pan-Arctic Observing System of Systems - pan-AOSS'
- Key milestone is to have terrestrial environmental monitoring sites established (led by INPA)
- 10 INTERACT stations are participating



ARCTIC PASSION

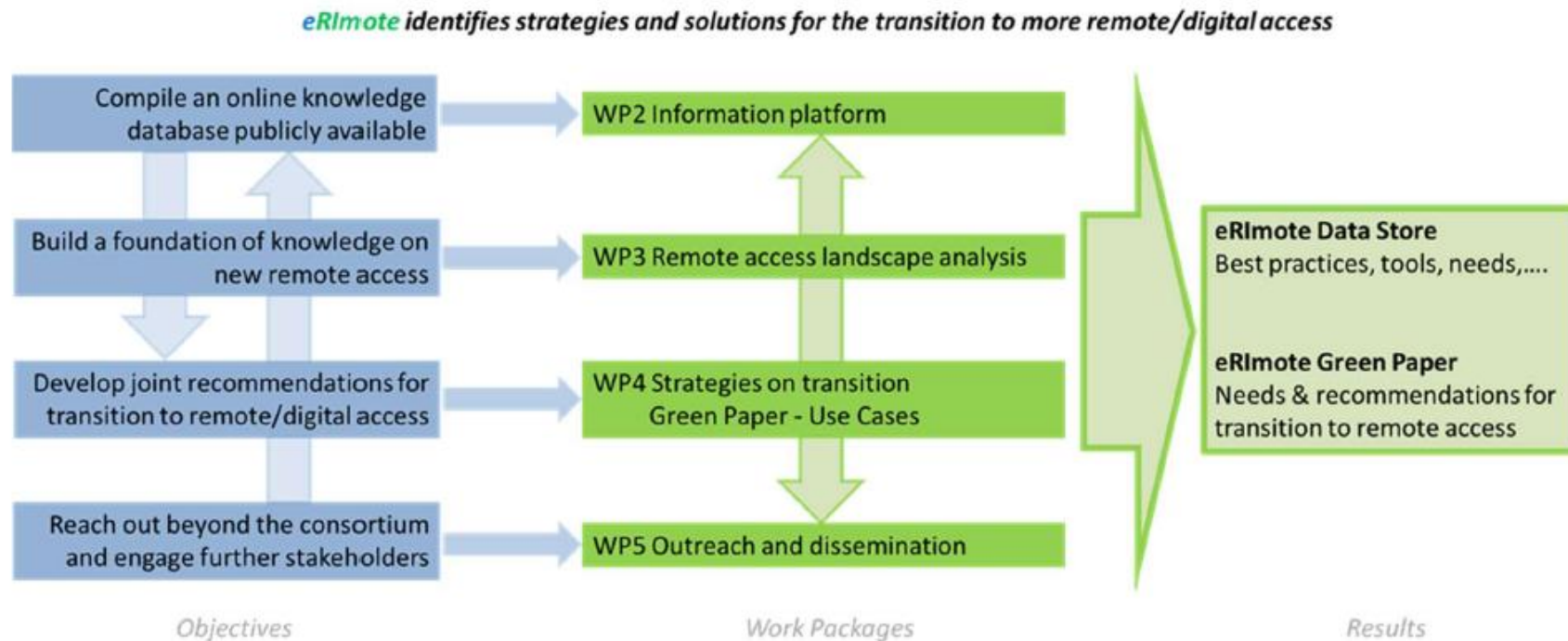
Arctic PASSION GA,
Denmark June 2022



Arctic PASSION Terrestrial Priority Parameters			Western Arctic Research Centre (WARC)	CEN Whapmag oostui- Kuujjuarap ik Station	Toolik Field Station	Arctic Station	Zackenber g Research Station	Kevo Subarctic Research Station	CNR Arctic Station "Dirigibile Italia"	Rif Field Station	NIBio Svanhovd research station	Churchill Northern Studies Centre (CNSC)
Category	Parameter											
Climate	Meteorology	Air temperature	YES	YES	YES	YES	YES	YES	YES	YES	YES	NO
Climate	Meteorology	Air humidity	YES	YES	YES	YES	YES	YES	YES	YES	YES	NO
Climate	Meteorology	Air pressure	YES	YES	YES	YES	YES	YES	YES	YES	YES	NO
Climate	Meteorology	Wind velocity	YES	YES	YES	YES	YES	YES	YES	YES	YES	NO
Climate	Meteorology	Wind direction	YES	YES	YES	YES	YES	YES	YES	YES	YES	NO
Climate	Meteorology	Precipitation	YES	YES	YES	YES	YES	YES	NO	YES	YES	NO
Climate	Energy balance and radiation	Short Wave incoming	NO	YES	YES	YES	YES	NO	YES	NO	YES	NO
Climate	Energy balance and radiation	Short wave outgoing	NO	YES	YES	YES	YES	NO	YES	NO	NO	NO
Climate	Energy balance and radiation	Long wave incoming	NO	NO	YES	YES	YES	NO	YES	NO	NO	NO
Climate	Energy balance and radiation	Long wave outgoing	NO	NO	YES	YES	YES	NO	YES	NO	NO	NO
Climate	Energy balance and radiation	Net radiation	NO	YES	YES	YES	YES	YES	YES	NO	NO	NO
Climate	Energy balance and radiation	UV-B	NO	NO	YES	YES	YES	NO	YES	NO	NO	NO
Climate	Energy balance and radiation	Sensible heat flux	NO	NO	NO	YES	YES	NO	NO	NO	NO	NO
Climate	Energy balance and radiation	Latent heat flux	NO	NO	NO	YES	YES	NO	NO	NO	NO	NO
Climate	Energy balance and radiation	Soil Heat flux	NO	NO	NO	YES	YES	YES	NO	NO	NO	NO
Cryosphere	Sub surface characteristics	Ground surface temperature	YES	YES	YES	YES	YES	YES	YES	NO	NO	NO
Cryosphere	Sub surface characteristics	Soil temperature	YES	YES	YES	YES	YES	YES	YES	YES	YES	NO
Cryosphere	Sub surface characteristics	Active layer depth	YES	YES	NO	NO	YES	YES	YES	NO	NO	NO
Cryosphere	Sub surface characteristics	Permafrost temperature	YES	YES	NO	NO	YES	YES	YES	NO	NO	NO
Cryosphere	Snow characteristics	Snow depth	YES	YES	YES	YES	YES	YES	YES	NO	NO	NO
Cryosphere	Snow characteristics	Snow density	NO	YES	NO	YES	YES	NO	NO	NO	NO	NO
Cryosphere	Snow characteristics	Snow temperature	NO	YES	NO	YES	YES	NO	NO	NO	NO	NO

eRimote

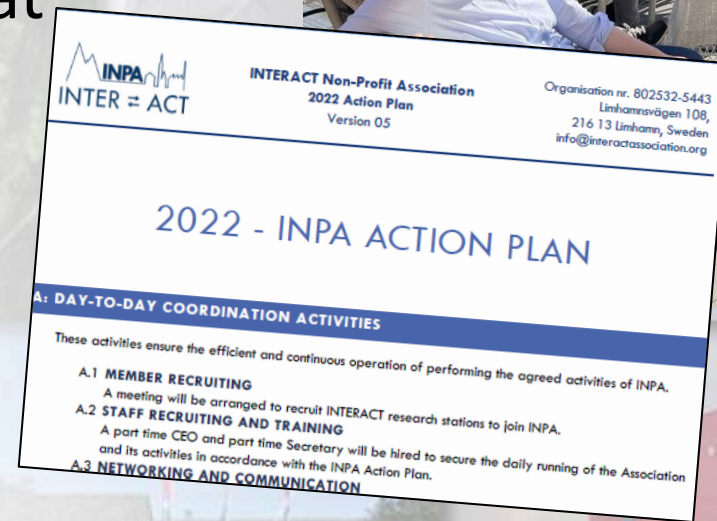
- Full project name: European Research Infrastructures - Pathway to Improved Resilience and Digital and Remote Access
- Kicked off in July 2022



1st General Assembly

- Election of a new Board of Directors
- Update of INPA Action Plan:
 - Include an INPA Transnational Access program
 - INPA “service menu” of what INPA can offer to projects, partners and stakeholders

1st General Assembly of INPA, Denmark May 2022





Your chance to give input

Go to: www.menti.com

Enter the Code: **7388 4807**



Go to: www.menti.com

Enter the Code: **7388 4807**



What INPA services would your station benefit from the most (including new ideas)?

INPA is working on the services / activities we can provide for our member stations and other stakeholders. We would like to hear what your station would benefit from.



Takk fyrir!

caro@interactassociation
info@interactassociation

