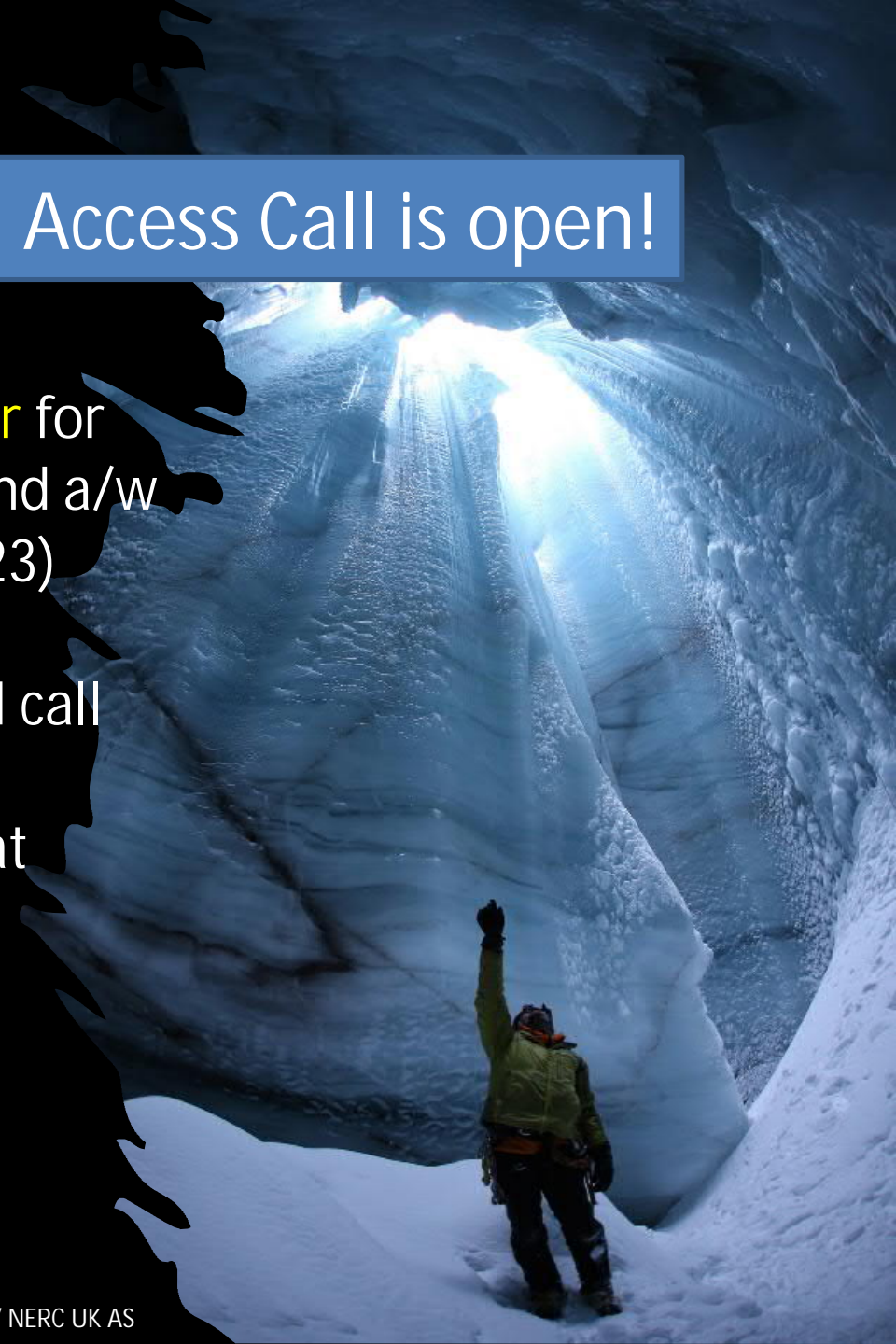


INTERACT Transnational Access Call is open!

Call is open until 30th November for access taking place in s/s 2022 and a/w 2022-23 (April 2022 – March 2023)

Check the available stations and call instructions, and apply for INTERACT Transnational Access at www.eu-interact.org





INTERACT Transnational Access

-What you should know when applying for TA/RA?

Hannele Savela, INTERACT TA Coordinator
University of Oulu
hannele.savela@oulu.fi

Content

- INTERACT in a nutshell
- Transnational Access & Remote Access
- Infrastructures available in the call
- Eligibility of the applicant for TA/RA
 - Application process & INTERACCESS application system
 - Evaluation process & selection priorities
 - Typical weaknesses in applications
- What happens after the TA/RA decisions?
- COVID-19 and granted access
- "To-do-list" for the applicant
- Q&A

INTERACT –The international Network for Research and Monitoring in the Arctic

89 research stations



EU-H2020 Infrastructures (10 M€), 2020-2023

63 consortium partners in 19 countries

Building capacity for monitoring, research and education throughout the Arctic

Transnational Access: support for world-class science

Station Managers' Forum: sharing best practices

International Networking: collaboration to build capacity

Joint Research Activities: extreme weather events, transport and communication, open data, improving education and awareness, documenting and reducing pollution, benefits and impacts of Arctic tourism

Outreach: sharing information and experiences



Infrastructures available in the ongoing call

<https://eu-interact.org/accessing-the-arctic/infrastructures/>

The following stations are NOT available in the TA/RA Call for s/s 2022 and a/w 2022-23: BARC, ISTOMINO, NESS, SUDURNES, QAANAAQ.

As an exception, the access to Station Samoylov in the Russian Federation is available only for s/s 2023. Applicants to Station Samoylov, please contact anne.morgenstern@awi.de for details about the station's availability dates.

Short name	Station	Country	SM Contact	TA/RA contact	RA	TA	VA
ANS	Abisko Scientific Research Station	Sweden	Magnus Augner	Magnus Augner	x	x	x
AMUPS	Adam Mickiewicz University Polar Station "Petuniabukta"	Svalbard, Norway	Krzysztof Rymer	Krzysztof Rymer		x	
AKTRU	Aktru Research Station	Russia	Sergey Kirpotin Sergey Astakhov	Olga Morozova	x	x	x
ARCST	Arctic Station	Greenland	Morten Rasch	Aart Kroon		x	x
BARC	Barrow Arctic Research Center/Environmental Observatory	Alaska	Nagruk Harcharek		x	x	
CHARS	Canadian High Arctic Research Station CHARS	Canada	Scott Johnson	Adam Houben		x	x
CEN WK	CEN Whapmagoostui-Kuujuarapik Research Station	Canada	Mickaël Lemay	Mickaël Lemay		x	x
CHO	Chokurdakh Scientific Tundra Station	Russia	Trofim Maximov	Trofim Maximov		x	
CNSC	Churchill Northern Studies Centre	Canada	LeeAnn Fishback	Eleanor Edye	x	x	x
DIR-ITA	CNR Arctic Station "Dirigibile Italia"	Svalbard, Norway	Luigi D'Acqui	Luigi D'Acqui Angelo Pietro Viola	x	x	x
CARS-PETUNIA	Czech Arctic Research Station	Svalbard, Norway	Jan Pechar	Marek Brož	x	x	
ECN CAIRNGORM	ECN Cairngorms	Scotland	Christopher Andrews	Christopher Andrews	x	x	
ELG	Elgeii Scientific Forest Station	Russia	Trofim Maximov	Trofim Maximov		x	
FINI	Faroe Islands Nature Investigation	Faroe Islands	Lis Mortensen	Lis Mortensen	x	x	x
FINSE	Finse Alpine Research Centre	Norway	Jens Haga	Torbjørn Ergon		x	
GINR	Greenland Institute of Natural Resources	Greenland	Katrine Raundrup	Katrine Raundrup	x	x	x
HYTTIALA	Hyttälä Forestry Research Station (SMEAR II)	Finland	Jaana Bäck	Jaana Bäck	x	x	x
ISTOMINO	International Ecological Educational Center "Istomino"	Russia	Alexander Aurjanov	Alexander Aurjanov		x	
KFRS	Kainuu Fisheries Research Station	Finland	Pekka Hyvärinen	Pekka Hyvärinen	x	x	x
KAJ	Kajbasovo Research Station	Russia	Sergey Kirpotin	Olga Morozova	x	x	x
KEVO	Kevo Subarctic Research Station	Finland	Otso Suominen	Otso Suominen	x	x	x

- 47 stations offering TA and 30 stations offering RA in the ongoing call
- Following stations are NOT available in the ongoing call: BARC, ISTOMINO, NESS, SUDURNES, QAANAAQ
- The access to Station Samoylov in the Russian Federation is available only for s/s 2023

Transnational Access

- > Free access to research infrastructures (stations) and support for travel and logistic costs
- > 52 research stations, 6495 person-days of access
- > Maximum TA per user group: 90 days in 2020-2023
- > What is realistic in terms of applied TA: 1-3 persons, 1-3 stations, 500 EUR – 15 000 EUR

Eligibility of TA applicants:

Trans-national = scientists are not eligible to their "national infrastructures", i.e. stations that are located in or operated by the same country where the scientist is working and residing

TA to User Groups, where majority of users are not from EU Member state or associated state is limited to 20% on the consortium level



Photo: Kari Mäenpää

Remote Access

- Modality of Transnational Access
- Station staff collects the samples according to your research plan
- 32 stations, 670 staff-days
- Logistic costs reimbursed
- Same application and evaluation process with TA
- Reduced environmental footprint
- Suitable for multi-station and comparative approach, but requires simple set-up



Photo: Jan Kavan

Eligibility for TA

Scientists are not eligible for TA to their "national infrastructures"

- Scientists working and residing in Denmark > not eligible to Greenlandic stations operated by Danish institutions
- Scientists working and residing in Czech Republic > not eligible to Czech Arctic Research Station in Svalbard
- Scientists working and residing in UK > not eligible to NERC Arctic Research Station in Svalbard
- Scientists working and residing in Poland > not eligible to Polish Polar Station in Hornsund in Svalbard
- Scientists working and residing in Germany > not eligible to Station Samoylov in Russia

Application Process



Photo: Arctic Live Team / NERC UK AS

- Call open until 30th Nov for access taking place between April 2022 – March 2023
- Call announcement and guidelines at <https://eu-interact.org/accessing-the-arctic/tacall/>
- INTERACCESS on-line application system www.eu-interaccess.org
- What happens after the call closes?
 - Eligibility check
 - Scientific evaluation
 - TA recommendations
 - TA decisions
- Access decisions announced in March 2022

INTERACCESS on-line application system

- Prepare and submit your application in INTERACCESS
- <https://eu-interaccess.org>
- Read the "Information for Applicants" and "Application Manual"
- Includes the whole TA application, evaluation and reporting process

INTERACCESS
LOGIN OR REGISTER

Available Calls

INTERACT Transnational Access and Remote Access call for April - August 2020

expire in a month
[status open](#)

Open on **August 12, 2019** close on **October 8, 2019**

The call is for INTERACT Transnational Access (TA) to 43 stations and Remote Access (RA) to 18 stations. Stations offering TA or RA are located across the Arctic and northern alpine and forest areas in Europe, Russia and North-America. The sites represent a variety of glacier, mountain, tundra, boreal forest, peatland and freshwater ecosystems, providing opportunities for researchers from natural sciences to human dimension. Note: applicants are not eligible for TA to their national infrastructures, i.e. stations that are located in the same country or operated by institutions located in the same country in which the applicant is working/residing. For example, scientists working in Finland are not eligible for TA to Finnish research stations, scientists working in UK are not eligible for TA to UK Arctic Research Station in Svalbard, scientists working in Denmark are not eligible for TA to research stations in Greenland, operated by Danish institutions.

Available stations

Kajbasovo Research Station (Russia)	Khanymei Research Station (Russia)
Cairngorms (Scotland, UK)	Faroe Islands Nature Investigation (FINI) (Faroe Islands)
Ríf Field Station (Iceland)	Sudurnes Science and Learning Center (Iceland)
Villum Research Station (VRS) (Greenland/Denmark)	Zackenberg Research Station (Greenland/Denmark)
Sermiilik Research Station (Greenland/Denmark)	Greenland Institute of Natural Resources (GINR) (Greenland)
Arctic Station (Greenland/Denmark)	CEN Whapmagoostui-Kuujuarapik Research Station (Canada)
Western Arctic Research Centre (WARC) (Canada)	Kluane Lake Research Station (Canada)

Evaluation Criteria

- Each application is graded for several evaluation criteria:
1) Scientific quality of the planned research, 2) Scientific merits of the TA User Group leader, 3) Relevance of the planned research for INTERACT goals, and 4) Value for money.
- Each criteria is scored from 1-5, where 1=poor, 2=satisfactory, 3=average, 4=good, 5=excellent.
- Ranking of applications is based on the total scores (max. 20)
- TA Board recommends user groups for TA to the research stations
- Stations make the TA decisions based on the recommendations, feasibility of the projects at the station, station strategy and focus areas etc.

Selection Priorities

The evaluation of user groups is based on the evaluation criteria, but taking into account that priority should be given to user groups who...

- Have not previously used the installation (station)
- Are working in countries where no equivalent research infrastructure exists >> justification asked in application form
- Apply working at more than one location for generating comparative studies
- To early career scientists (≤ 5 years from a PhD degree)

Typical weaknesses in applications

- The application instructions have not been read/followed
 - Eligibility
 - Budgeting
 - Length and form of the required appendixes
- Applicant has not done his/her homework on what has already been done on the topic at the station/region
- The importance/novelty of the research is not clearly justified
- The feasibility of the study to the station has not been checked
 - Travel and logistic arrangements
 - Amount of access days needed
 - Required facilities at station
 - Local conditions (phenology, species etc)
 - You can contact the station to ask for the feasibility beforehand!!!
 - >> <https://eu-interact.org/accessing-the-arctic/infrastructures/>
 - >> <https://eu-interact.org/accessing-the-arctic/info-user-groups/>

What happens after the TA/RA decisions?

- TA/RA decisions are sent to applicants via INTERACCESS
 - Granted person-days of TA/RA
 - Granted travel and logistic costs
- Applicants Accept/Reject the granted access in INTERACCESS
- Before the TA visit
 - TA users make their travel arrangements, freight, licenses, permits, insurances, visa etc. themselves, but in consultation with stations and WP5
- After the TA visit
 - Project report submitted in INTERACCESS
 - Travel and logistic costs are reimbursed after the visit by the stations, based on actual direct costs
- Membership in the TA User Community
 - Webinars for information
 - TA User Group Facebook group for discussions and practical questions
 - TA User community meetings on-line and back to back with congresses etc.
 - Next TA User Community meeting at ASSW2022 in Tromsø, Norway, in March 2022

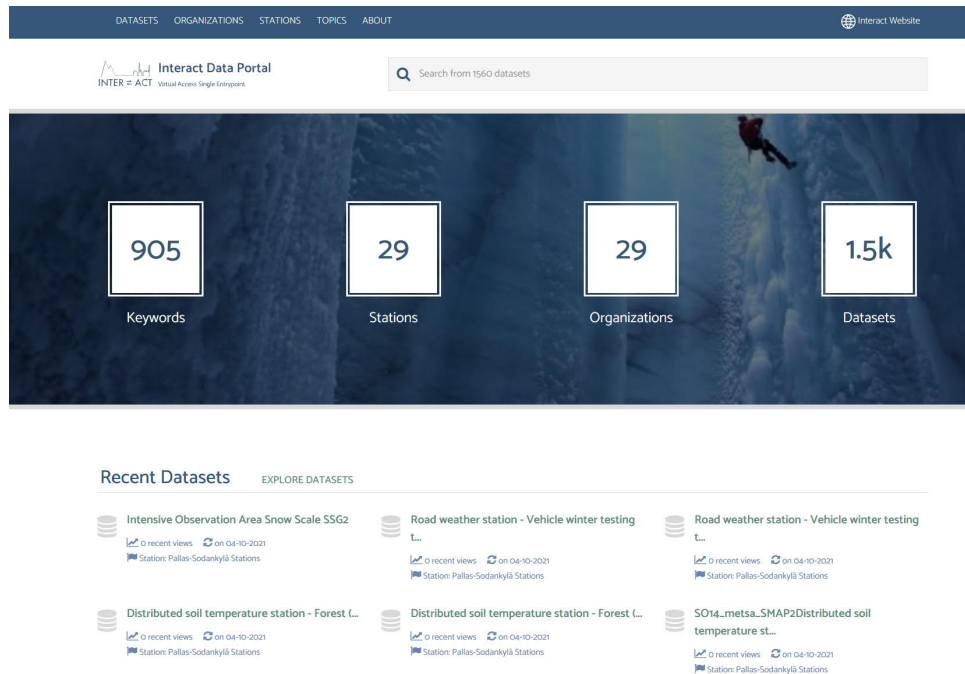
COVID-19 and TA

- Call, evaluation, and access decisions take place in a regular manner
- National/regional regulations on travel and safety followed
- If necessary, it's possible to postpone the granted access or negotiate a shift from physical TA to RA
 - Book transferable/refundable flights
 - Quarantine accommodation costs can be reimbursed up to 50 EUR/person/day
 - Note: Vaccinations, COVID-19 tests, travel insurance or insurances of any kind are not reimbursed
- TA Users contact the station to agree on the possible postponement of shift of access modality with station
 - TA Coordination informed about the postponement and new estimated timing / shift of access modality from TA to RA

Applicant "to-do-list"

- 1) Visit TA/RA Call pages at <https://eu-interact.org/accessing-the-arctic/tacall/> > Read call information and instructions carefully
- 2) Register to INTERACCESS > Read Information for Applicants and Application Manual > Prepare and submit TA application
- 3) Find out information about the station, where you are applying to
 - a) <https://eu-interact.org/field-sites/>
 - b) <https://eu-interact.org/accessing-the-arctic/infrastructures/>
 - c) Contact the station manager to ask about feasibility and possibly required permitting etc.
<https://eu-interact.org/accessing-the-arctic/info-user-groups/>
- 4) Check your eligibility for TA to the station(s) where you plan to apply
- 5) Learn what has already been done on the topic at the station/region and build your planned research on that
- 6) Clearly justify the importance/novelty of the applied research
- 7) Check your budget > read budgeting info from "Information for Applicants"

Virtual Access available at INTERACT Data Portal



- Free and open access to data and metadata
- <https://dataportal.eu-interact.org/>
- Unique retrospective/historical datasets available from variety of stations
- Can supplement your data obtained with TA/RA

Apply INTERACT TA to conduct research at the coolest places of the North!



www.eu-interact.org