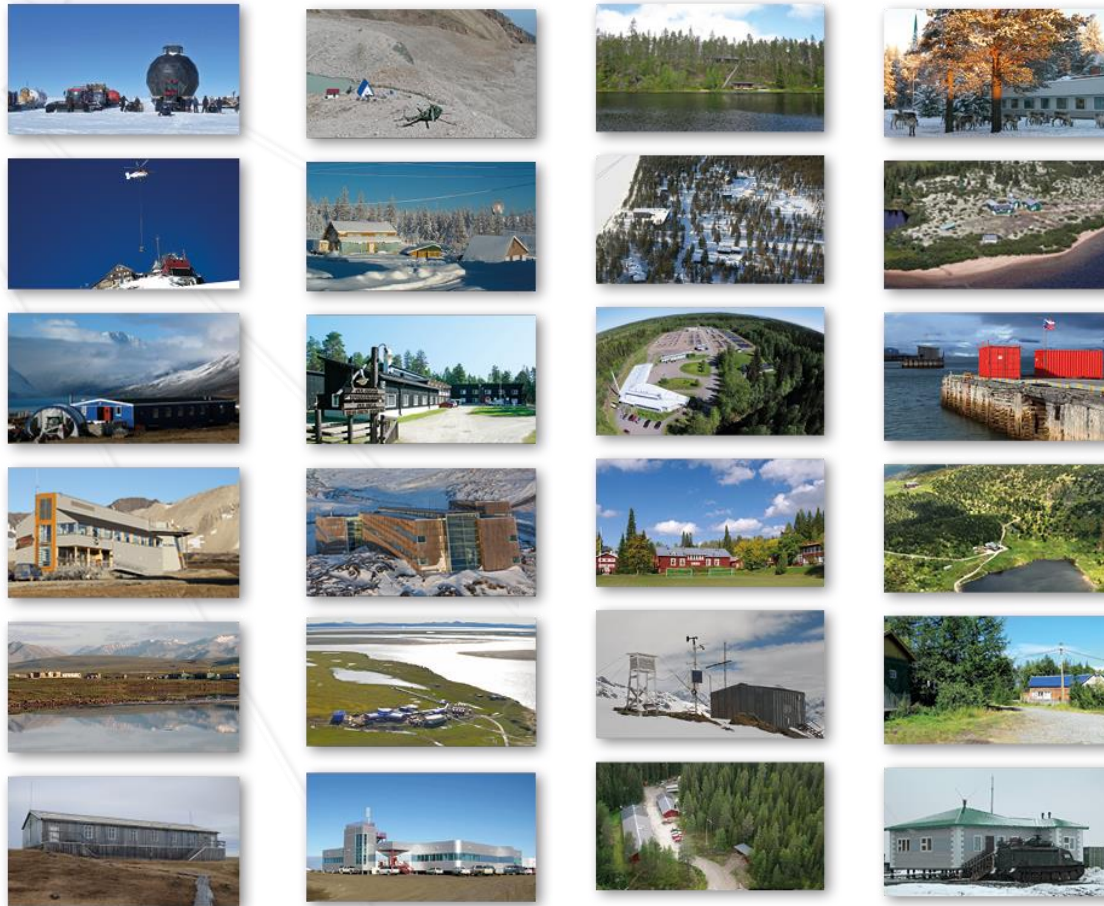


WP 2 – Station Managers' Forum in INTERACT III



Morten Rasch
Elmer Topp-Jørgensen
Marie Frost Arndal



*INTERACT III General Assembly,
26 May 2021*



Reporting

The reporting given here is the formal INTERACT III General Assembly 3 reporting of Workpackage 2.

Reporting of the progress in Workpackage 2 will be much more detailed during the Station Managers' Forum tomorrow.

This reporting only includes the progress in relation to the INTERACT III contract, i.e. the formal Milestones and Deliverables.



Aims of WP 2 - SMF

The aim of the INTERACT's Station Manager Forum (SMF) is to foster a culture of cooperation between stations and with scientific communities, industries, local communities and infrastructures in other regions.

Specifically, the objectives are to:

- A. Innovate station management to better support excellent research and monitoring and to collect, exchange and refine information needed for operating INTERACT stations as one advanced infrastructure.
- B. Support excellent science and innovation addressing INTERACT's Societal Challenges (SC) by interfacing with JRA's and TA/RA/VA activities.
- C. Integrate new partner stations, their activities and data in the existing advanced community of INTERACT stations.
- D. Promote cooperation on infrastructure management and safety with Antarctic, alpine, atmospheric and marine communities.

WP2 Tasks

Task 2.0 Operate the Station Managers' Forum (UCPH)

SMF meetings, publication updates, seminars, INETRACT GIS, etc.

- Three SMF's have been held (**M2.1-3**).
- Three seminars of relevance to station managers have been held (**M2.6-8/9**).
- Workshop with participation of the marine and the atmospheric research infrastructure communities has been held (**M2.11**).
- *Station Catalogue* updated, *Images of Arctic Science* published, three new guidebooks ready or almost ready for publication.
- INTERACT GIS under development with new and more user friendly user interface.

Task 2.1 The unpredictable Arctic – WP4 (AU)

Contribute to method development, test implementation, provide observations on extreme events.

- Identification of extreme event types to be used in test monitoring programme in progress.



Societal challenges

UN Sustainable Development Goals



WP2 Tasks

Task 2.2 Transport and communication – WP5 (AWI)

Arctic Council science cooperation agreement, communication and positioning systems, reduction of CO2 emissions from travel.

- Internet platform concerning rules, regulations and permit needs (for each arctic country) of relevance to scientists planning fieldwork in arctic countries ready for launch (**D2.6**).
- A session concerning field communication and navigation has been held at SMF 2 (**M2.14**).
- The '*INTERACT Communication and Navigation Guidebook*' ready for publication.
- APECS working group to produce the '*INTERACT Reducing the CO2 Emission from Arctic Science*' guidebook' has been established, a list of content has been made and writing is in progress.

Task 2.3 Making station data and publications widely available – WP6 (UCPH)

Seminars on state of the art monitoring, scientific network standards, repository for selected climate variables.

- Start up phase to identify essential variables feeding into regional/global assessments.
- INTERACT GIS in process of being prepared for a repository for selected climate variables for each INTERACT Station. Selection of parameters of relevance in process.
- Fruitful coordination across workpackages in INTERACT Data Team established by Workpackage 3 to secure harmonization of data standards across INTERACT and with international standards.
- Photos for use in machine learning delivered by station managers to Workpackage 6 (**M2.17**).

WP2 Tasks

Task 2.4 Educating local communities and decision makers – WP7 (UCPH)

Courses on community based monitoring, 'Open House' days, course on how to communicate with decision makers and the use of press releases.

- Fortunately, Milestones/Deliverable are late in INTERACT III (Months 25, 31, 40) due to the COVID situation making courses and 'Open House' arrangements in local communities difficult.
- Start-up phase with discussions with relevant stakeholders.
- Seminar on how to communicate with decision makers and use of press releases in preparation for SMF IV.

Task 2.5 Cleaner Arctic – WP8 (Lead: AU)

Explore ways to reduce pollution and emissions from research stations, Field test implementation of plastic monitoring programme.

- 'INTERACT Reducing the Environmental Impacts of Arctic Fieldwork' ready for publication.
- 'INTERACT Reducing the Environmental Impact of Arctic Research Stations' almost ready for publication.
- Survey on Pollution Screening Activities at INTERACT Stations has been carried through by AMAP.



Societal challenges

UN Sustainable Development Goals



WP2 Tasks

Task 2.6 The Arctic Resort – WP9 (Lead: UKRI)

Assess tourism potential near INTERACT stations, how to communicate with tourists, input to guidelines for tourist operators.

- Milestone 2.24, Evaluation of tourism potential at INTERACT Stations, has been reached.
- A survey among station managers concerning tourism at/near research stations has been carried through.
- A draft 'INTERACT Station Specific Guidelines' for cruise ship operators has been produced by AECO.



Societal challenges

UN Sustainable Development Goals





WP2 Deliverables

D2.1 INTERACT GIS with new features (Month 22)

D2.2 Updated digital Station Catalogue integrated in INTERACT GIS (Month 28)

D2.3 Web-editions of updated 'Best Practices of Station Management' (Month 35)

D2.4 Web-editions of updated 'INTERACT Fieldwork Planning Handbook' (Month 48)

D2.5 Updated 'INTERACT Minimum Monitoring Programme' (Month 48)

D2.6 Guide on research permit systems for all arctic countries on INTERACT website (Month 14)

D2.7 Pocket guide on how to reduce CO2 emissions in Arctic science (Month 26)

D2.8 Pocket guide on metadata standards for scientific networks (Month 29)

D2.9 Repository with selected data from INTERACT stations integrated in INTERACT GIS (Month 44)

D2.10 Checklist for environmentally friendly stations (Month 36)

D2.11 Pocket guide on how to reduce plastic consumption and pollution (Month 40)

D2.12 Pocket guide on how to handle effects of tourism at research stations and in adjacent local communities (Month 30)

D2.13 Pocket guide for tourist on how to behave around research station, incl. their study areas and local communities (Month 30)

WP2 Milestones

Milestone	Milestone name	Deadline (Month)
M2.1-5	SMF Meeting	3,13,25,37, 48
M2.6-9	Seminars on themes chosen by station managers	3,13,25,37
M2.10	Technical staff workshop	25
M2.11	Workshop on best practices of research infrastructure management with participation of other communities	13
M2.12	Extreme event monitoring field test implemented at minimum four stations	36
M2.13	Rapid biodiversity change monitoring field test implemented at minimum four stations	42
M2.14	Session at SMF on communication and positioning systems	13
M2.15-16	Seminars on state-of-the-art methods/technologies for environmental monitoring	25,37
M2.17	Selection of photos from different stations provided to WP6	12
M2.18	Courses on community based monitoring of local relevance held at schools and/or high schools near four stations	25
M2.19-20	'Open House' thematic days on respectively invasive species and plastic at minimum ten research stations	31,40
M2.21	Course for station managers on improvement of communication to decision makers	40



WP2 Milestones

Milestone	Milestone name	Deadline (Month)
M2.22	Survey on resource use and disposal (incl. plastic) at research stations presented at SMF	37
M2.23	Plastic monitoring programme implemented at four stations	30
M2.24	Evaluation of tourism potential at INTERACT stations	12



WP2 Conclusions

Work is in progress in accordance with the contract.

Cooperation among partners within the workpackage, with partners in other workpackages and with stakeholders outside INTERACT is well-coordinated and efficient.

We miss meeting all of you at a real meeting.



Thank you

