

## Integrating Activities for Advanced Communities



### D1.10 – INTERACT bi-annual Newsletter 7

Project No.871120– INTERACT

H2020-INFRAIA-2019-1

Start date of project: 2020/01/01

Duration: 48 months

Due date of deliverable: 2023/05/31

Actual Submission date: 2023/05/11

Lead partner for deliverable: Lund University

Authors: Katharina Beckmann and Margareta Johansson

Dissemination Level		
<b>PU</b>	Public	X
<b>PP</b>	Restricted to other programme participants (including the Commission Services)	
<b>RE</b>	Restricted to a group specified by the Consortium (including the Commission Services)	
<b>CO</b>	Confidential, only for members of the Consortium (including the Commission Services)	

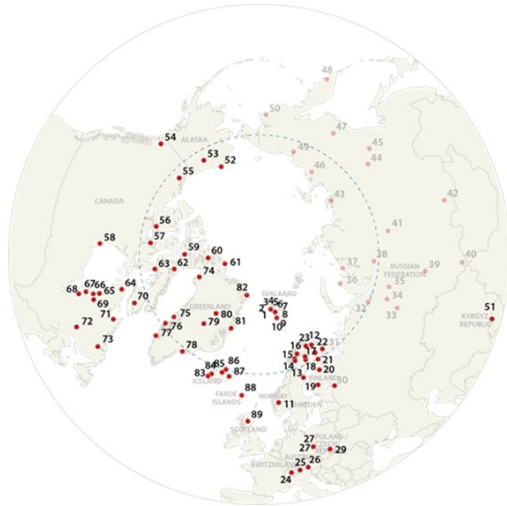
---

## Table of Contents

**Publishable Executive Summary..... 3**  
**1. INTERACT III - Newsletter 7.....**

## Publishable Executive Summary

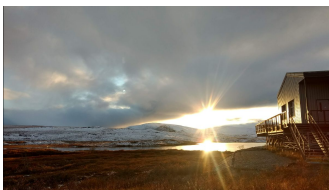
The seventh INTERACT newsletter presents information from month 36 to month 41 of the project. It presents highlights such as the upcoming annual meeting in Alaska, US, and the beginning of this year's field season. It also summarizes a successful INTERACT Transnational Access user community meeting that was held at the Arctic Science Summit Week earlier this year. Furthermore, deliverable reports, new publications, and educational resources are presented. News from the stations and new stations joining the network are also included in this newsletter. Finally, a new section regarding the legacy of INTERACT as a long-term sustainable network has been added, containing news on INPA (INTERACT Non-Profit Association).



# INTERACT NEWSLETTER

INTERACT III NEWSLETTER #7 MAY 2023

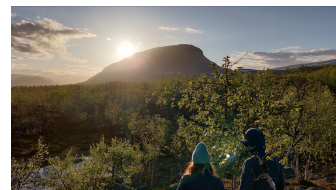
## Top stories in this newsletter



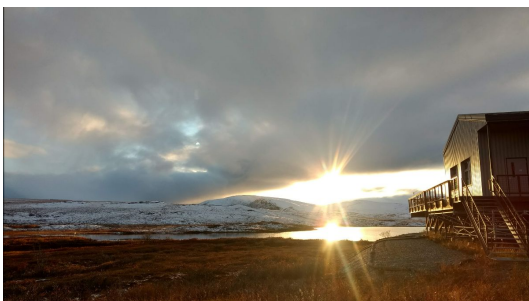
**Upcoming INTERACT  
annual meeting in  
Alaska**



**INTERACT Non-Profit  
Association (INPA)**



**TA Field season 2023**

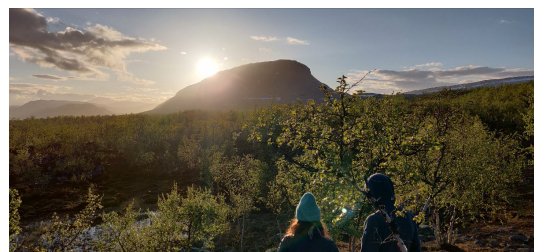


## Field season 2023

The access decisions from the 4th TA/RA Call of INTERACT 3 have been finalised, and the first user groups have already reached the research stations! In total 49 projects, representing a wide

## Upcoming INTERACT annual meeting in Alaska

We are delighted to announce that our next INTERACT General Assembly and Station Managers' Forum will be held at Toolik Field Station in Alaska 11-15 September.





variety of research from e.g. glaciology, biogeochemistry, microbiology and permafrost studies, were granted access to 29 research stations. We wish good luck and productive field work to all TA users for the field season! You can follow the adventures and experiences of the researchers from the [INTERACT Arctic Research Blogs](#)



## Successful INTERACT TA User Community Meeting

---

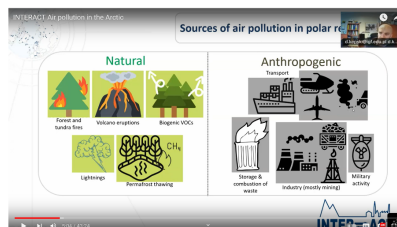
INTERACT TA User Community Meeting took place in Vienna on 20th February 2023, during the ASSW2023. The sessions included highlight presentations from past TA Users and a panel discussion between TA Users, station representatives and other experts on research infrastructure services such as the European Polar Board to examine challenges and future possibilities and directions of Transnational and Remote Access. Thanks to everyone who participated and contributed to the discussion! The full meeting was recorded and is available at [this link](#).

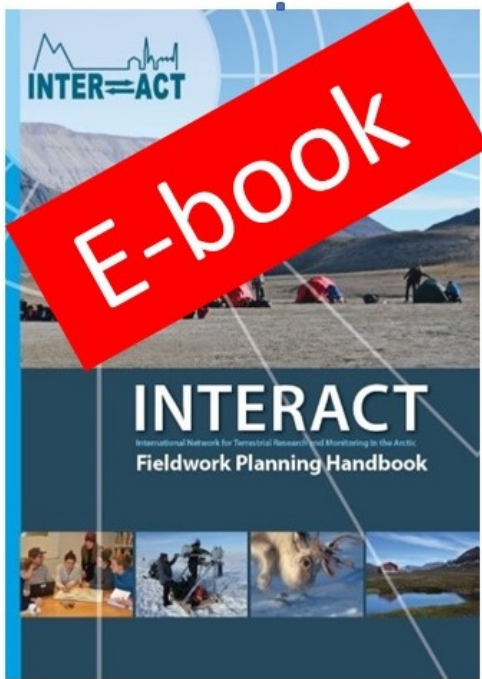
## New Educational Resources and Webinars

---

Many new online lessons are available on INTERACT's [YouTube channel](#) and on the INTERACT [website](#). Among these we have Dagmara Bozek from the Institute of Geophysics, Polish Academy of Sciences, who gives a lesson on [Plastic in the Arctic](#), another on [Surviving the Arctic](#), and one on [Plants Adaptation](#).

More educational resources are available on the INTERACT [website](#).





## New Publications

---

One of INTERACT's most popular publications is the Fieldwork Planning Handbook. You might have come across it at our book stand at meetings and conferences, or read it in PDF format here on the website. Now you have the chance to read it in e-book format!

E-book download: [eu-interaccess.org/Field\\_work\\_planning\\_Handbook.epub](https://interaccess.org/Field_work_planning_Handbook.epub)

If you do not have any e-reader already installed on the phone, tablet or pc etc., we suggest to download calibre which is an easy to use e-book manager. Calibre is completely free and open source and can be downloaded here: [Calibre ebook management](#)

## INTERACT's presence in social media

---

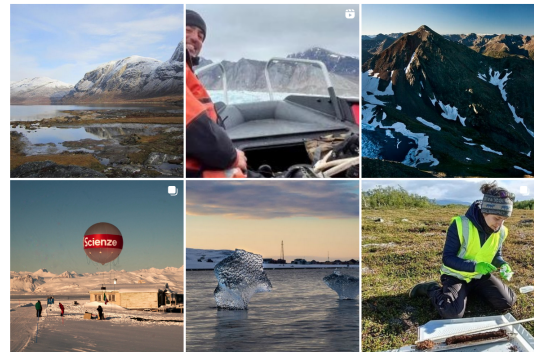
Stay tuned in between the newsletters by following INTERACT on your favourite social media channel.

**Facebook:** [facebook.com/InteractArctic](https://facebook.com/InteractArctic)

**Instagram:** [instagram.com/eu\\_interact/](https://instagram.com/eu_interact/)

**Twitter:** [twitter.com/INTERACT66](https://twitter.com/INTERACT66)

**LinkedIn:** [linkedin.com/company/eu-interact/](https://linkedin.com/company/eu-interact/)



## news from the stations



## Abisko scientific research station

---

After more than two years of travel restrictions due to the pandemic, the Abisko Scientific Research Station has been back at full speed last year. The summer of 2022 was one of the busiest summers in the history of the research station, bustling with activity: fieldwork, labwork, university courses, workshops, meetings, and study visits. The station accommodated more than 70 research projects, driven by an eclectic community of junior and senior researchers, students, field assistants and interns. The long-term environmental monitoring programmes of [ICOS](#) and [SITES](#) also continue successfully, and this past spring, the [ICOS Stordalen](#) site was officially classed as a Class 2 ICOS site.

Photo credit: Dominik Merges (top left) and Emily Pickering Pedersen, 2022

## Greenland Institute of Natural Resources

---

The Greenland Institute of Natural Resources participated in the national “Cultural Night” on January 21<sup>st</sup>, 2023. INTERACT had a booth where posters (in Greenlandic and Danish) and books were shown and handed out. Instrumentation from the long-term monitoring program GEM operated at the Kobbefjord Research Station was also presented. The institute was visited by more than 1500 people during the 4 hours it was open (a lot on a Nuuk-scale) and all visitors learned something new about INTERACT as well as effects of climate change.



## The Barrow Arctic Research Center (BARC)

---

The Barrow Arctic Research Center (BARC), located on Inupiaq lands, is operated by UIC Science. The Outreach team, led by Bernice Oyagak, includes a local liaison/ videographer, Lloyd Pikok, and an Arctic Indigenous Traditional Ecologic Knowledge (ITEK) Specialist, Martin Edwardsen. The team has a wealth of knowledge and expertise passed down through generations of traditional practices and knowledge systems of the Inupiat people.

Martin Edwardsen (photo) has an extensive knowledge of the local flora and fauna, as well as the seasonal cycles and weather patterns of the region. He also has expertise in traditional hunting, fishing practices, traditional technologies, and materials used for clothing, shelter, and transportation in the harsh Arctic environment. The outreach team’s expertise in Inupiat traditional knowledge and their ability to communicate this knowledge effectively will be invaluable in helping to ensure research teams have a successful field season. Their work bridges a gap between traditional knowledge and modern science, leading to a more holistic approach to research.



## ECN Cairngorms

---

Following the exciting project conducted in WP6 [Computer Vision for Camera Trap Footage: Comparing classification with object detection](#) the team have now published their image files as they appreciate the need for good training sets when conducting AI research. Reference: Andrews, C.; Dick, J. (2023). Motion-activated camera trap images from the ECN Cairngorm long-term monitoring site, 2010-2022. NERC EDS Environmental Information Data Centre. (Dataset can be found [here](#)).



## The Flashline Mars Arctic Research Station

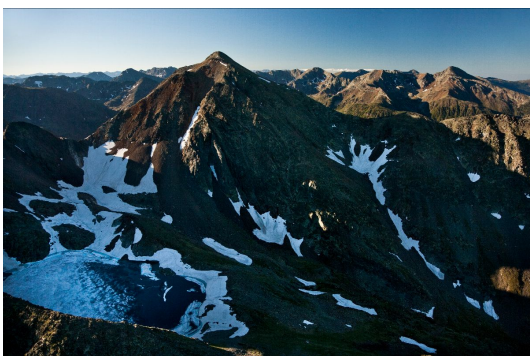
---

Following an extended hiatus due to the COVID-19 pandemic, the Mars Society's Flashline Mars Arctic Research Station (FMARS), will be hosting an international team at its facility on Devon Island in northern Canada in July 2023. The 4-week mission will include field studies focusing on geology, weather, and biological research, along with maintenance and upgrade work at the station. "The Return" as the mission is being called by the crew is expected to lead to annual visits to FMARS in the coming years. To learn more, please visit: [fmars.marssociety.org](http://fmars.marssociety.org) or contact Station Manager Susan Holden Martin: [susanm@marssociety.org](mailto:susanm@marssociety.org).

## New stations in the network

---

We are happy to welcome several new stations to the network: [Tsambagarav research station](#) in Mongolia; [Alt Pirineu Natural Park](#) in Spain (longer presentation follows below), RB Miller Field Station and Barrier Lake Field Station in Canada; Koltur Research Station in Faroe Islands, and Lammi Biological Station in Finland.



## Alt Pirineu Natural Park

---

One of the new sites in the INTERACT network is Alt Pirineu Natural Park. It is located in the Catalan Pyrenees and is the southernmost INTERACT site in Europe. It offers a unique alpine environment to conduct comparative studies with northern areas along bioclimatic gradients or along broad altitudinal gradients within the Natural Park (from 650 to 3143 m a.s.l.), encompassing eurosiberian landscapes and alpine tundra. The site hosts magnificent

and well preserved geological and natural values. In the Alt Pirineu we can find many typical arctic and boreal species at their southernmost range of distribution.

## INTERACT Non-Profit Association (INPA)

### Updates from INPA

INPA (INTERACT Non-Profit Association) is a very young organisation, only founded in 2020, which aspires to carry forward the legacy of INTERACT as a long-term sustainable network. Over the last year INPA has been involved in the EU project Arctic PASSION improving monitoring across the Arctic for years to come. Another project INPA is playing an important role in is the EU project eRImote, which is addressing various challenges related to Remote and Digital Access Provision.



### INPA General Assembly

INPA's latest General Assembly took place on the 10<sup>th</sup> May 2023 in Denmark, where activities and projects to come over the next 12 months were discussed. If you would like your station to get involved with INPA, please get in touch with [info@interactassociation.org](mailto:info@interactassociation.org) or fill out [this registration form](#).

## milestones & deliverables

### Deliverable from Work Package 8

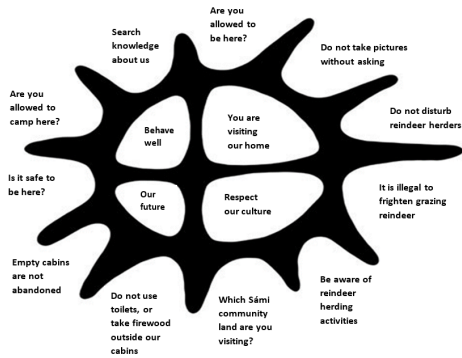
Work package 8 has published a new deliverable report where the main objectives of the work package are to work with station managers (WP2) to identify potential sources of emerging contaminants of concern and reduce their impacts. This deliverable examines options for practical work that could be implemented at INTERACT stations to support environmental contaminants monitoring and research. It relates specifically to the task of 'testing the protocols developed to enhance screening monitoring applications at INTERACT Stations, and where possible linking this to ongoing screening



Figure A1. Stations responding to survey (yellow circles indicate WP8 core pilot implementation stations).

monitoring programs and networks'. It presents the outcome of a workshop arranged to promote monitoring at INTERACT stations based on deployment of passive samplers, and the status of subsequent follow-up activities.

All INTERACT deliverable reports can be found on our [website](#) and this specific report can be downloaded [here](#).



## Deliverables from Work Package 9

The main output of deliverable 9.1 is the development of a template for INTERACT Station Specific Tourism Guidelines; a tool which allows the station and the surrounding area to present themselves to tourists and outline what considerations visitors should take when visiting. The template can be found here: [eu-interact.org/tourism/](http://eu-interact.org/tourism/)

The focus of deliverable 9.2 has mainly been the development of Sámi guidelines, resulting in a beautiful website [www.samigeaidnu.com](http://www.samigeaidnu.com) containing recommendations for policymakers, tour operators and Sámi communities. The Sámi sun illustrates questions and statements of importance for Sámi communities related to tourism. The Sámi sun is often illustrated in religious drums, sometimes dividing the drum in several sections, other times appearing in a section of the drum.

All INTERACT deliverable reports can be found on our [website](#) and this specific report can be downloaded [here](#).



---

[View this email in your browser](#)

Copyright © 2023 \*|INTERACT|\*, All rights reserved.

**Our mailing address is:**

\*|katharina.beckmann@nateko.lu.se|\*

Want to change how you receive these emails?  
You can [update your preferences](#) or [unsubscribe from this list](#).