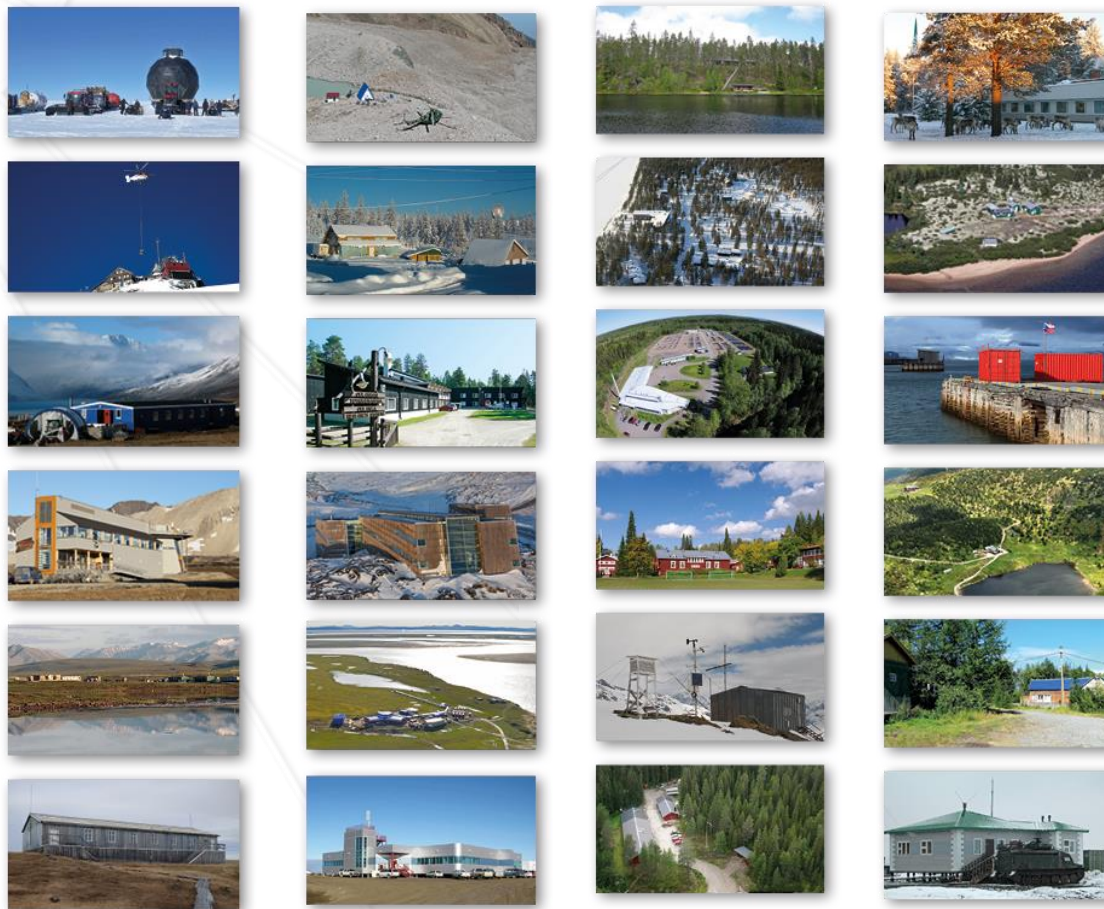


WP 2 – Station Managers' Forum in INTERACT III



*INTERACT III General Assembly,
24 September 2020*

Elmer Topp-Jørgensen
Morten Rasch
Marie Arndal, Laura Lønstrup



Aims of WP 2 - SMF

The main aims of the INTERACT's Station Manager Forum (SMF) is to foster a culture of cooperation between stations and with scientific communities, industries, local communities and infrastructures in other regions.

Specifically, the objectives are to:

- A. Innovate station management to better support excellent research and monitoring and to collect, exchange and refine information needed for operating INTERACT stations as one advanced infrastructure.
- B. Support excellent science and innovation addressing INTERACT's Societal Challenges (SC) by interfacing with JRA's and TA/RA/VA activities.
- C. Integrate new partner stations, their activities and data in the existing advanced community of INTERACT stations.
- D. Promote cooperation on infrastructure management and safety with Antarctic, alpine, atmospheric and marine communities





WP2 Tasks

Task 2.0 Operate the Station Managers' Forum (UCPH)

- SMF meetings, publication updates, seminars, INETRACT GIS, etc.

Task 2.1 The unpredictable Arctic – WP4 (AU)

- Contribute to method development, field test implementation, provide observations on extreme events.

In proces: Identification of types of extreme events

Task 2.2 Transport and communication – WP5 (AWI)

- Arctic Council science cooperation agreement, communication and positioning systems, reduction of CO2 emissions from travel.

In proces: APECS working with SMF input, pocket guide draft

Task 2.3 Making station data and publications widely available – WP6 (UCPH)

- Seminars on state of the art monitoring, scientific network standards, repository for selected climate variables.

Start-up phase: identification of essential variables feeding into regional/global assessments



Societal challenges
UN Sustainable Development Goals



WP2 Tasks

Task 2.4 Educating local communities and decision makers – WP7 (UCPH)

- Courses on community based monitoring, 'Open House' days, course on how to communicate with decision makers and the use of press releases.

Start-up phase

Task 2.5 Cleaner Arctic – WP8 (Lead: AU)

- Explore ways to reduce pollution and emissions from research stations, Field test implementation of plastic monitoring programme.

In proces: Survey under development

Task 2.6 The Arctic Resort – WP9 (Lead: UKRI)

- Assess tourism potential near INTERACT stations, how to communicate with tourists, input to guidelines for tourist operators.

In proces: Working with input from SMF, survey ready



Societal challenges
UN Sustainable Development Goals





WP2 Deliverables

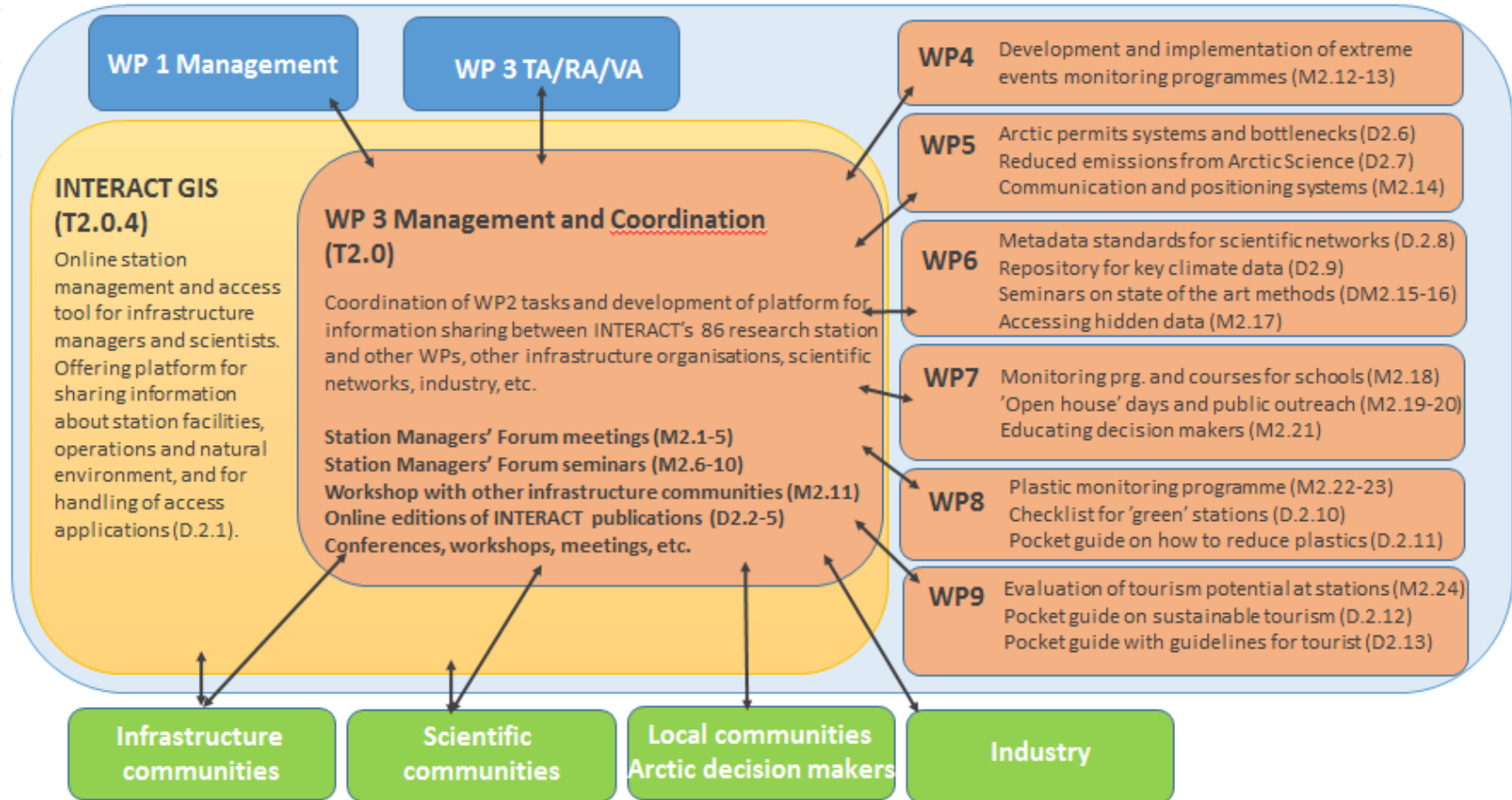
- D2.1** INTERACT GIS with new features (Month 22)
- D2.2** Updated digital Station Catalogue integrated in INTERACT GIS (Month 28)
- D2.3** Web-editions of updated 'Best Practices of Station Management' (Month 35)
- D2.4** Web-editions of updated 'INTERACT Fieldwork Planning Handbook' (Month 48)
- D2.5** Updated 'INTERACT Minimum Monitoring Programme' (Month 48)
- D2.6** Guide on research permit systems for all arctic countries on INTERACT website (Month 14)
- D2.7** Pocket guide on how to reduce CO2 emissions in Arctic science (Month 26)
- D2.8** Pocket guide on metadata standards for scientific networks (Month 29)
- D2.9** Repository with selected data from INTERACT stations integrated in INTERACT GIS (Month 44)
- D2.10** Checklist for environmentally friendly stations (Month 36)
- D2.11** Pocket guide on how to reduce plastic consumption and pollution (Month 40)
- D2.12** Pocket guide on how to handle effects of tourism at research stations and in adjacent local communities (Month 30)
- D2.13** Pocket guide for tourist on how to behave around research station, incl. their study areas and local communities (Month 30)

WP2 Milestones

Milestone number	Milestone name	Due date (in month)
M2.1-5	SMF Meeting	3,13,25,37, 48
M2.6-9	Seminars on themes chosen by station managers	3,13,25,37
M2.10	Technical staff workshop	25
M2.11	Workshop on best practices of research infrastructure management with participation of other communities	13
M2.12	Extreme event monitoring field test implemented at minimum four stations	36
M2.13	Rapid biodiversity change monitoring field test implemented at minimum four stations	42
M2.14	Session at SMF on communication and positioning systems	13
M2.15-16	Seminars on state-of-the-art methods/technologies for environmental monitoring	25,37
M2.17	Selection of photos from different stations provided to WP6	12
M2.18	Courses on community based monitoring of local relevance held at schools and/or high schools near four stations	25
M2.19-20	‘Open House’ thematic days on respectively invasive species and plastic at minimum ten research stations	31,40
M2.21	Course for station managers on improvement of communication to decision makers	40

Postponed
due to COVID-19

Requirements from others



Goal

- Pocket guide: Overview of communication and navigation strategies and tools, comparison of advantages, disadvantages, coverage and considerations
- Laminated card to take into the field:
Key information, eg. emergency protocol, contact information, etc.

Target group

- Station staff and visiting researchers

How we work

- APECS Project group, 6 active members
- Outline and first draft nearly ready (November)
- **Station manager survey:** how do visiting researchers learn about communication & navigation routines and tools, what common pitfalls exist, and how can the community learn from these.

1	INTRODUCTION		Author
	Communication & Navigation basics		
	Importance of communication (and navigation)		Chris tel & Andrea
	The duty to communicate		Chris tel & Andrea
	Challenges of communication and navigation in high latitudes		Chris tel & Andrea
2	COMMUNICATION		
	Communication procedures		
	Before fieldwork	Field work plans	Rebecca
		Checklists	Rebecca
		Briefings	Rebecca
		Group whereabouts : Sign out/in procedures	Rebecca
	During fieldwork	Briefings	Rebecca
		Toolbox meetings	Andrea
		Routine calls	Rebecca
		Non-routine calls	Rebecca
		Emergency calls	Rebecca
	After fieldwork		Rebecca
	Communication devices		
		Analysis of your needs	Charlie
		Analysis of external requirements	Charlie
		Types of devices: Mobile Phone	Charlie
		Satellite Phone	Charlie
		HF Radio	Sinan
		VHF Radio	Sinan
		InReach	Andrea
		SPOT	Andrea
		Devices based on the Cospas-Sarsat programme	Andrea
		General information about how the emergency beacons work, technical details	Marta
		PLB	Marta
		EPIRB	Sinan
		ELT	Andrea
		Others	Sinan
		Comparison of all devices	Chris tel
3	NAVIGATION		
	Navigation basics	Analysing your needs	Marta
	Navigation devices	Topographic map	Marta
		Magnetic compass	Marta
		GPS	Charlie
		Other	
		Comparison of all devices (table)	Marta
4	RECOMMENDATIONS		
		Use of devices in the field	Andrea
		Future developments	Andrea, help is a
		Checklist relevant contacts	Chris tel & Andrea
5	RESOURCES		

Current outline and progress



done
in the making/nearly done

Next steps

- Review, align structure of the sections
- Compare with INTERACT Station Management Handbook (avoid content overlap & match format)
- Find more pictures
- Work in lessons learned from **Station Manager Survey - Please fill in the survey if you have not yet!**

Thank you

