



Morten Rasch

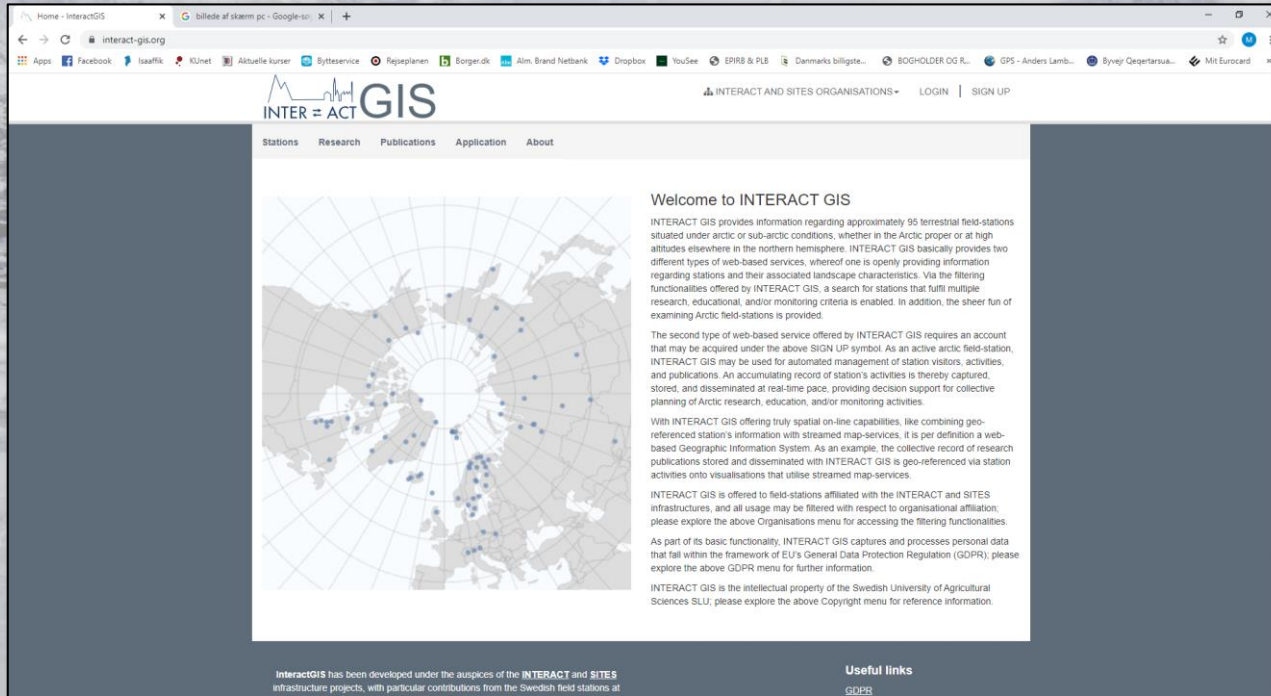
University of Copenhagen, Denmark

INTERACT GIS Management Organisation in INTERACT III

www.eu-interact.org



INTERACT GIS Management Organisation



The screenshot shows the INTERACT GIS website in a web browser. The browser's address bar displays 'interact-gis.org'. The website's header includes the 'INTER = ACT GIS' logo and navigation links for 'INTERACT AND SITES ORGANISATIONS', 'LOGIN', and 'SIGN UP'. Below the header, a navigation menu lists 'Stations', 'Research', 'Publications', 'Application', and 'About'. The main content area features a map of the Arctic region with numerous blue dots representing field stations. To the right of the map, a 'Welcome to INTERACT GIS' section provides information about the platform, including its purpose, functionalities, and contact information. At the bottom of the page, there are sections for 'Useful links' and 'INTERACT GIS has been developed under the auspices of the INTERACT and SITES infrastructure projects, with particular contributions from the Swedish field stations at'.

Home - InteractGIS x G billede af skærm pc - Google-ss x +

interact-gis.org

Apps Facebook Isaaffik KUmet Aktuelle kurser Bytjeservice Rejseplanen Borger.dk Alm. Brand Netbank Dropbox YouSee SPRB & PLB Danmarks billigste... BOGHOLDER OG R... GPS - Anders Lamb... Byvej Qegetarsu... Mit Eurocard

INTERACT AND SITES ORGANISATIONS LOGIN SIGN UP

INTER = ACT GIS

Stations Research Publications Application About

Welcome to INTERACT GIS

INTERACT GIS provides information regarding approximately 95 terrestrial field-stations situated under arctic or sub-arctic conditions, whether in the Arctic proper or at high altitudes elsewhere in the northern hemisphere. INTERACT GIS basically provides two different types of web-based services, whereof one is openly providing information regarding stations and their associated landscape characteristics. Via the filtering functionalities offered by INTERACT GIS, a search for stations that fulfil multiple research, educational, and/or monitoring criteria is enabled. In addition, the sheer fun of examining Arctic field-stations is provided.

The second type of web-based service offered by INTERACT GIS requires an account that may be acquired under the above SIGN UP symbol. As an active arctic field-station, INTERACT GIS may be used for automated management of station visitors, activities, and publications. An accumulating record of station's activities is thereby captured, stored, and disseminated at real-time pace, providing decision support for collective planning of Arctic research, education, and/or monitoring activities.

With INTERACT GIS offering truly spatial on-line capabilities, like combining geo-referenced station's information with streamed map-services, it is per definition a web-based Geographic Information System. As an example, the collective record of research publications stored and disseminated with INTERACT GIS is geo-referenced via station activities onto visualisations that utilise streamed map-services.

INTERACT GIS is offered to field-stations affiliated with the INTERACT and SITES infrastructures, and all usage may be filtered with respect to organisational affiliation, please explore the above Organisations menu for accessing the filtering functionalities.

As part of its basic functionality, INTERACT GIS captures and processes personal data that fall within the framework of EU's General Data Protection Regulation (GDPR), please explore the above GDPR menu for further information.

INTERACT GIS is the intellectual property of the Swedish University of Agricultural Sciences SLU, please explore the above Copyright menu for reference information.

InteractGIS has been developed under the auspices of the INTERACT and SITES infrastructure projects, with particular contributions from the Swedish field stations at

Useful links
GDPR



INTERACT GIS Management Organisation

Status of INTERACT GIS

INTERACT GIS has been developed during INTERACT I and INTERACT II.

It now includes the following modules:

- A station catalogue module
- A research project database
- A publication database
- An application module (for application for access to research stations)

Currently, only two stations use the INTERACT GIS application module.



INTERACT GIS Management Organisation

Development plans for INTERACT GIS during INTERACT III

Further development of the system will take place during INTERACT III.

We have promised to do the following (Subtask 2.0.4 in Workpackage 2):

- Develop INTERACT GIS to make it a leading international platform.
- Consolidate the INTERACT GIS Management Organisation.
- Ensure an effective operation with an increasing number of stations involved (i.e. stations using the application module).
- Integrate standard station descriptions and science metadata and data in formats developed in cooperation with relevant organisations/networks.
- Integrate thematic maps (climate zones, vegetation, permafrost etc.) in cooperation with relevant organisations/networks.



Major challenge during INTERACT III
To make the system application module
attractive to research stations!!!



INTERACT GIS Management Organisation

Thoughts about the need for a management organization

- It is part of the INTERACT II Description of Work to establish an INTERACT GIS management organization with the purpose of securing a continued run of INTERACT GIS after funding from the EU Commission runs out.
- We have not been good enough in making the use of the system application module attractive to stations involved in INTERACT. The application module is a very important part of INTERACT GIS - also because it is one of the feeding systems for the INTERACT GIS project database.
- We now have the chance in INTERACT III to increase the number of stations using the application module and thereby securing that INTERACT GIS will become a leading arctic research project database.

Continued



INTERACT GIS Management Organisation

- If we do not succeed with this, I do not consider it very probable that INTERACT GIS will have a legacy/life beyond INTERACT III.
- It is therefore suggested that the possible establishment of a more permanent INTERACT GIS Management Organisation is postponed to the last few months of INTERACT III (i.e. the autumn of 2023), when we know whether or not it is probable that INTERACT GIS will have a life after INTERACT.



INTERACT GIS Management Organisation

Suggestions concerning the 'formal' framework for the run and development of INTERACT GIS during INTERACT III:

- INTERACT GIS will be run and further developed in close cooperation between the Station Manager Forum and Umeå University.
- An INTERACT GIS Daily Management Group with Skype meetings once every month and on ad hoc basis (when needed) will be established with participation of two representatives of the Station Manager Forum Secretariat and two representatives of Umeå University.
- Suggestions concerning larger developments of the system will be made by the INTERACT GIS Daily Management Group to be discussed at a Station Manager Forum before system developments are being initiated.

Continued

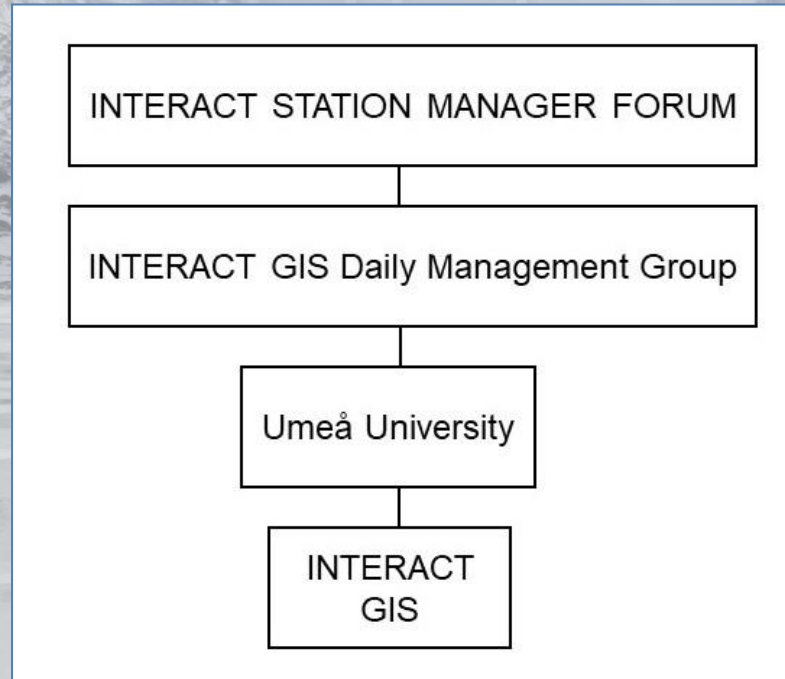


INTERACT GIS Management Organisation

- The Station Manager Forum Secretariat will pay all expenses concerning hosting of the INTERACT GIS during entire INTERACT III.
- The further development of the INTERACT GIS during INTERACT III will take place via funding from INTERACT III to Umeå University.
- The Station Manager Forum Secretariat is obliged to suggest, no later than 30 September 2023, a more permanent management organization to be established when the funding for INTERACT III runs out.
- The Station Manager Forum Secretariat takes responsibility for promoting the system internally in INTERACT to secure that much more stations will find it attractive to use the system in general and specifically the application module.



INTERACT GIS Management Organisation





Let's INTERACT

www.eu-interact.org

