

# INTERACT WP7



# INTERACT Work Package 7:

## Improving and harmonizing biodiversity monitoring

### Overall objectives:

- Establish interface between CBMP and INTERACT
- Inform development of the Rif Field Station in Iceland based on lessons learnt at Zackenberg and CHARS
- Test CBMP Freshwater and Terrestrial monitoring plans in the field
- Develop a user manual for implementation
- Identify how data from INTERACT stations can inform Arctic Council initiatives



# Arctic Biodiversity Monitoring Efforts

- Limitations:
  - Uncoordinated efforts operating in isolation
  - Lack long term commitment and funding
  - Inaccessible information
  - Lacking link to decision makers and local communities
- Shortcomings lead to:
  - Lack of circumpolar perspective
  - Incomplete coverage
  - Limited ability to detect change
  - Reduced ability to inform policy makers
- CBMP is implementing better coordinated monitoring, harmonization of data, communication. Local involvement is important part in the implementation.



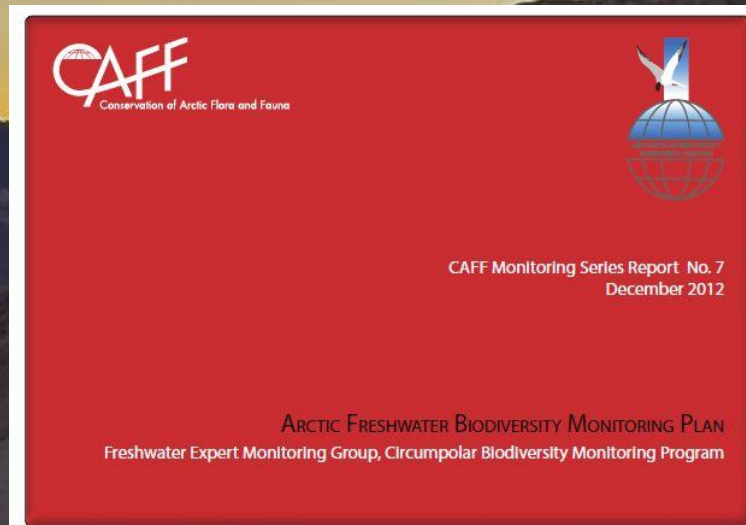
# What is the CBMP?

## Circumpolar Biodiversity Monitoring Program (CBMP)

- Coordinated Arctic monitoring
- International network of networks, monitoring, understanding and reporting Arctic biodiversity trends

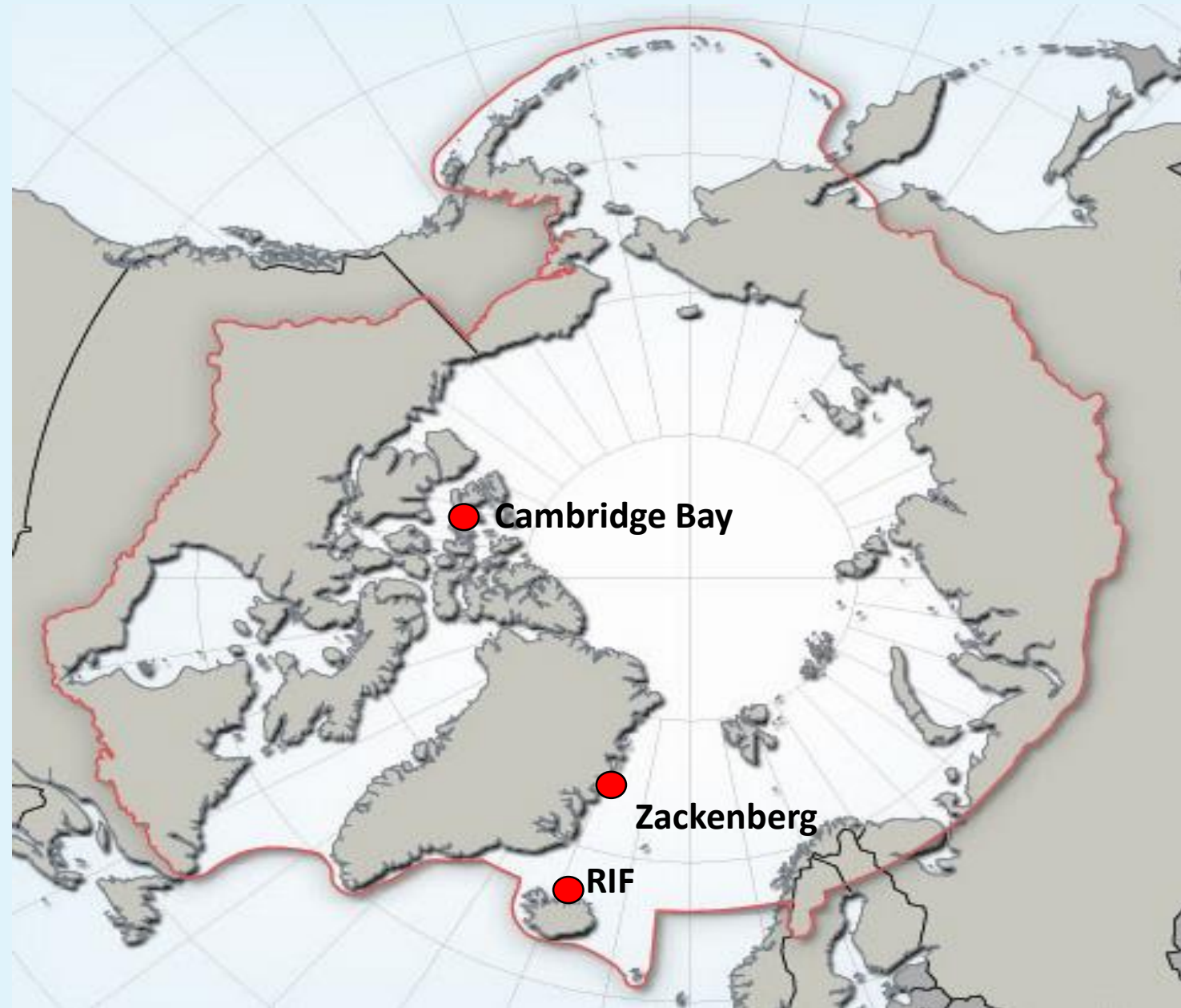


# Freshwater and Terrestrial Monitoring Plan



# The WP7 team:

- CAFF (team leader)
- Aarhus University
- Three reference stations:
  - Rif Field Station, Iceland
  - Zackenberg, Greenland
  - CHARS, Canada
- Different latitude, resource base and level of establishment



# Establish advisory group

- **Establish advisory group**
  - 3 Station Managers/ scientific leaders
  - CBMP leads from terrestrial and freshwater group
  - Relevant country CBMP SG members
  - CAFF secretariat
  - CBMP Co-Chair
- Guide and advise 3 INTERACT field stations in implementation of CBMP Monitoring Plan

## WP7: Deliverables

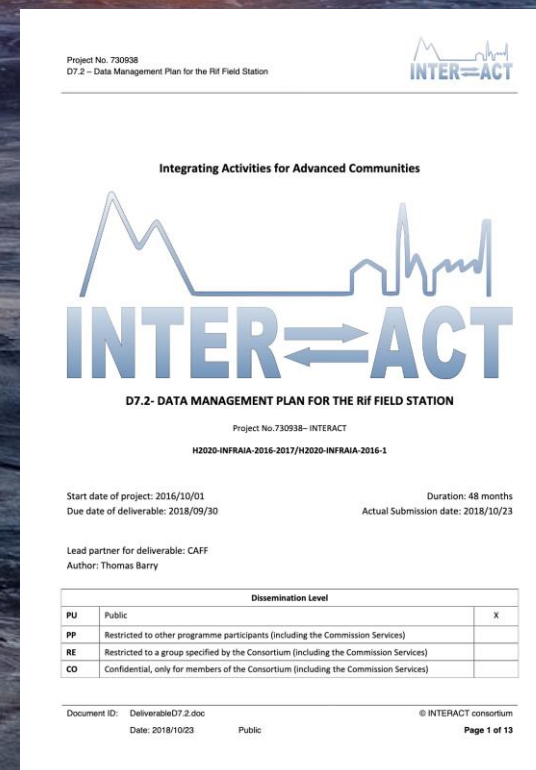
- A data management plan for the Rif station (31.09.2018)
- Implementation of pilot studies of selected focal ecosystem components. 31.03.2019
- A user manual for implementing CBMP at INTERACT stations. 31.01.2020
- A report describing the flow of data from the field to Arctic Council assessments, monitoring and reporting activities. 31.03.2020



- Three monitoring workshops:
  - Raufarhöfn, August 2017
  - Copenhagen, April 2018
  - Raufarhöfn, June 2019
- Data management workshop:
  - Akureyri, August 2018



- Workshop Report 1
- Workshop Report 2
- Workshop Report 3
- Rif Monitoring Plan
- Rif Data Management Plan

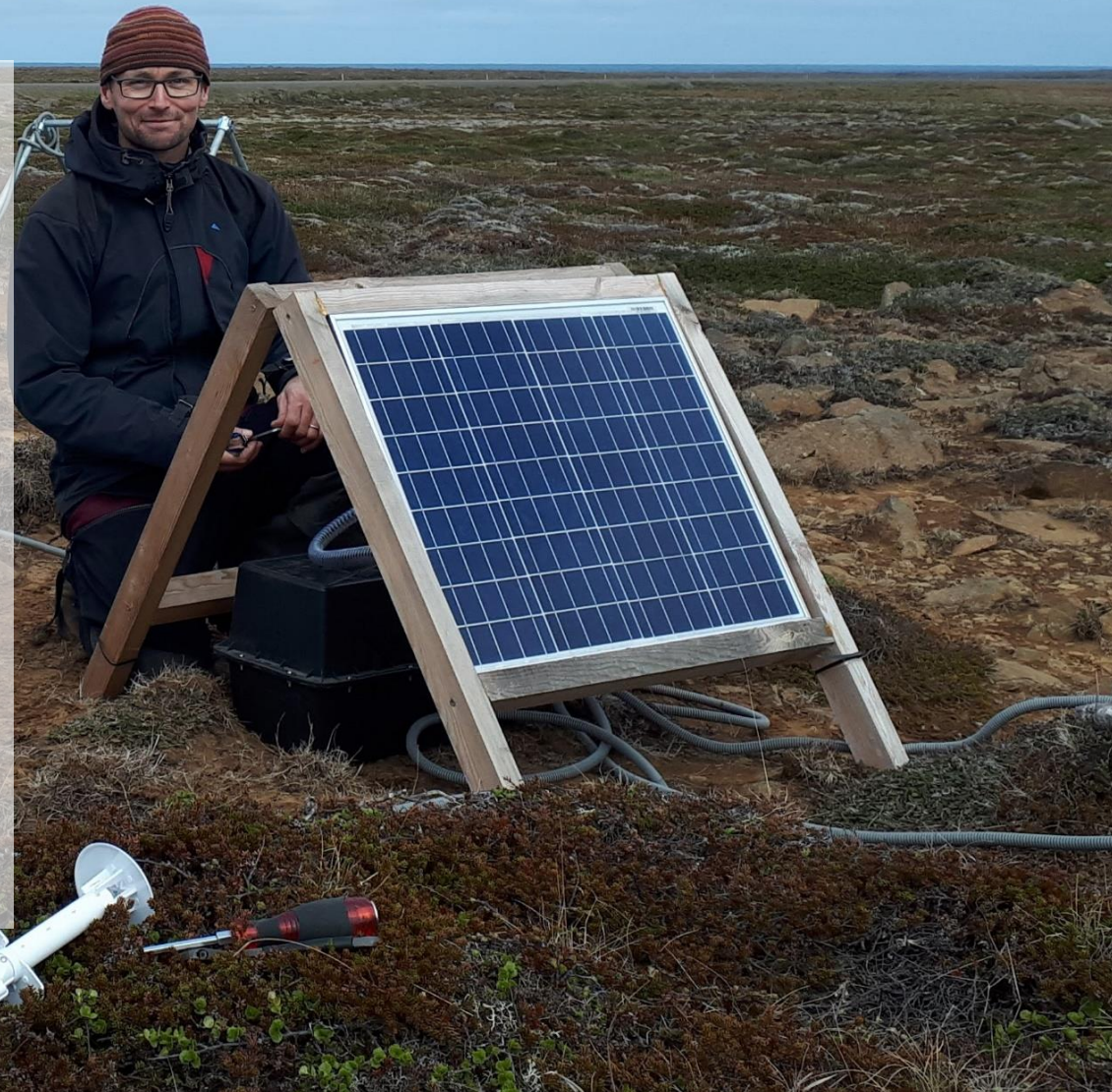


# A data management plan for the Rif station (31.09.2018)

- Describes principles and guidelines for management of data and information generated at RIF.
- Priorities;
  - Long term preservation
  - Timely access to datasets
  - Discoverability

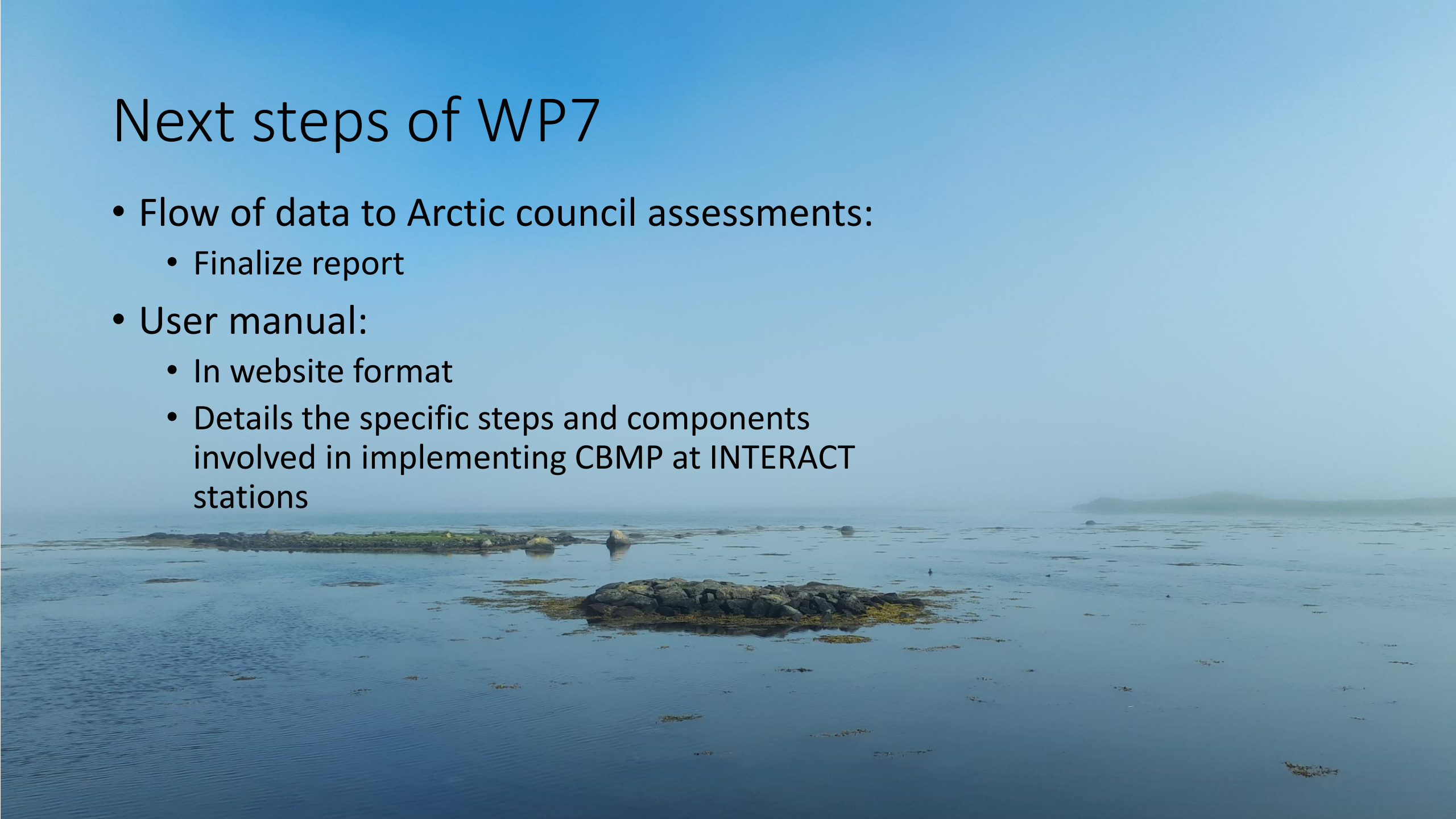
# Implementation of pilot studies of selected focal ecosystem components. 31.03.2019

- Phenology and pollination
  - BitCue project - already established in Rif and Zackenberg
  - Intended as part of long term monitoring at Rif
- Barcoding
  - Complimentary to traditional arthropod species identification
- Ecosystem mapping
  - CHARS method to be carried out at Zackenberg and Rif
  - Focus on vegetation monitoring between stations

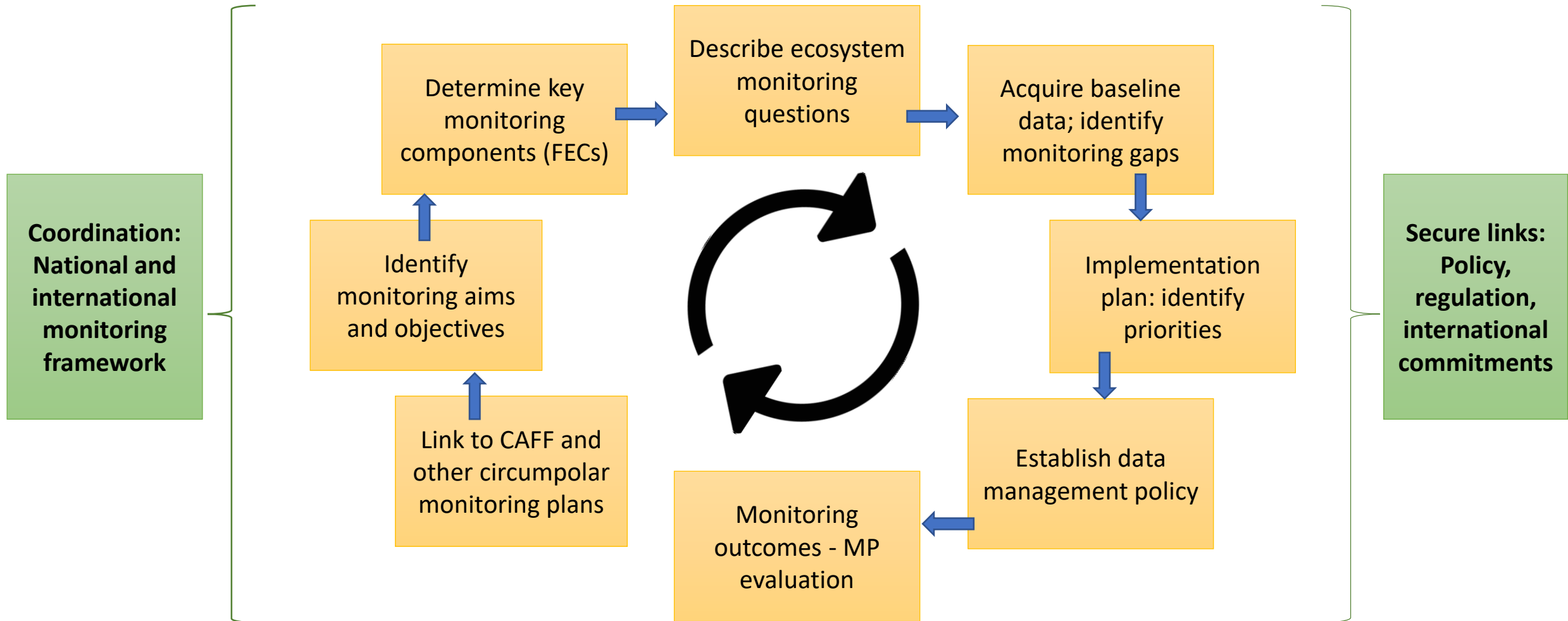


# Next steps of WP7

- Flow of data to Arctic council assessments:
  - Finalize report
- User manual:
  - In website format
  - Details the specific steps and components involved in implementing CBMP at INTERACT stations



- A user manual for implementing CBMP at INTERACT stations. 31.01.2020



# Benefits/importance of WP7

- At Rif:

- Strengthens the argument of Rif as a key site for Arctic research in Iceland
- Improved data management
- Facilitation of permanent partnerships and synergistic effects with other monitoring institutions and projects
- Addresses gaps in Iceland's monitoring commitments in light of international agreements
- Important base for future research

- For CBMP and Arctic Council

- Opportunity to test the monitoring plans in the field.
- Generates user manual for implementation at Interact stations- that also can be applied in a broader application
- Works toward coordination and more rapid assessments for policy makers



**Thank you**

