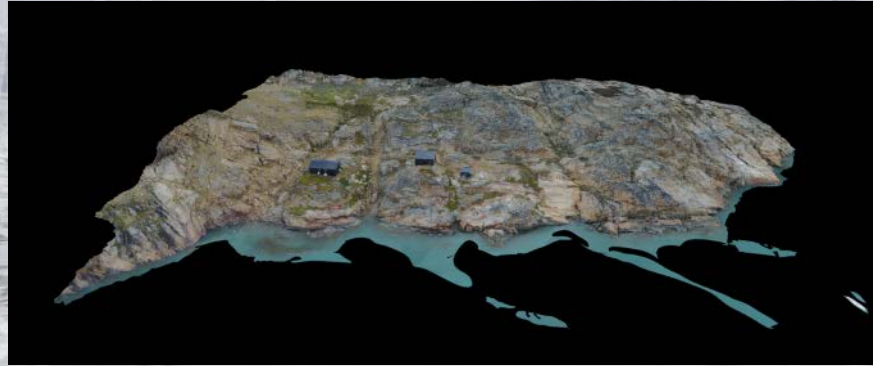


By Morten Rasch



Station Managers'
Forum



Precise mapping in the field

by very simple means

www.eu-interact.org



INTERACT II, Station Managers' Forum V, Svartberget, Sweden, 10-11 September 2019



Precise mapping in the field

Procedures:

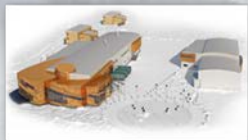
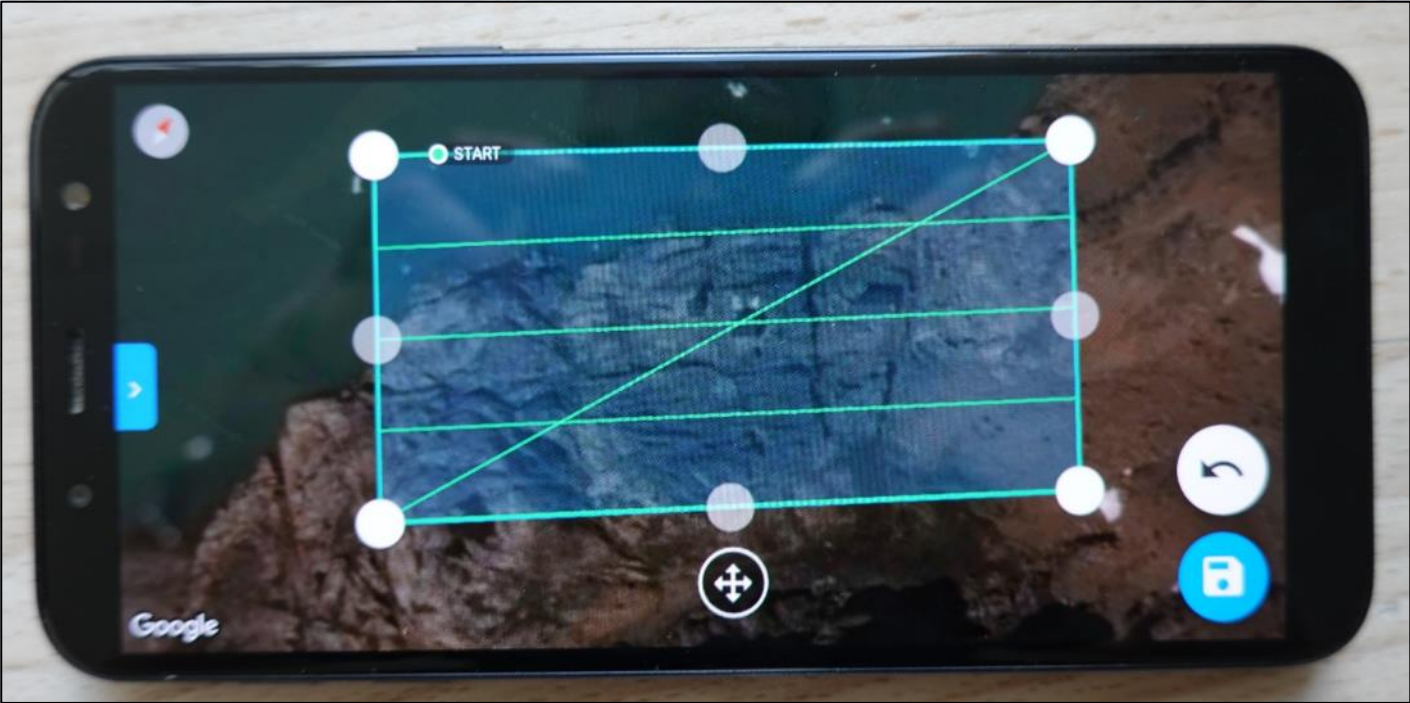
1. Download Drone Deploy to your cell phone.
2. Define the area you want to map on your cell phone and decide on resolution in picture products.
3. Start you drone.
4. Let Drone Deploy do its mapping flight. Change batteries when drone lands - in case it is needed.
5. Turn off drone when it lands.
6. Upload pictures from your drone to your computer.
7. Upload pictures to the Drone Deploy home page.
8. Process the map products you want.
9. Wait for a e-mail saying that your products are ready.
10. Download your maps.
11. Fourteen days 'Free trial'. Thereafter, c. 400 USD for one month.



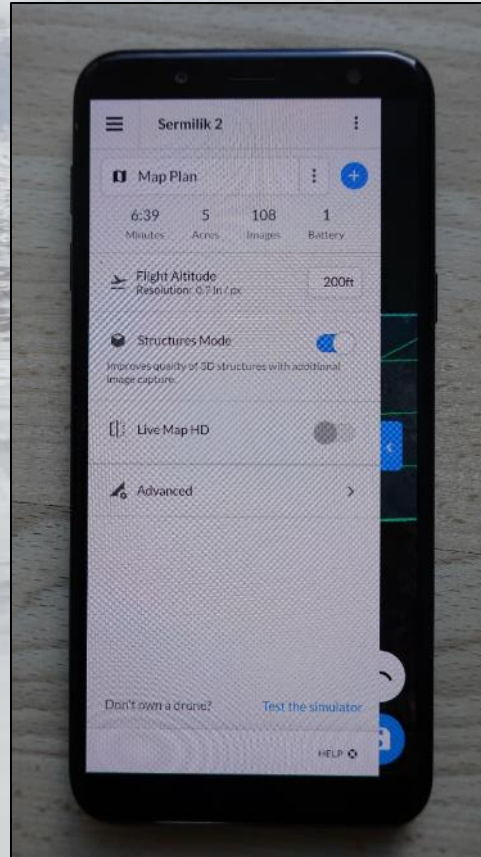
Precise mapping in the field



Precise mapping in the field



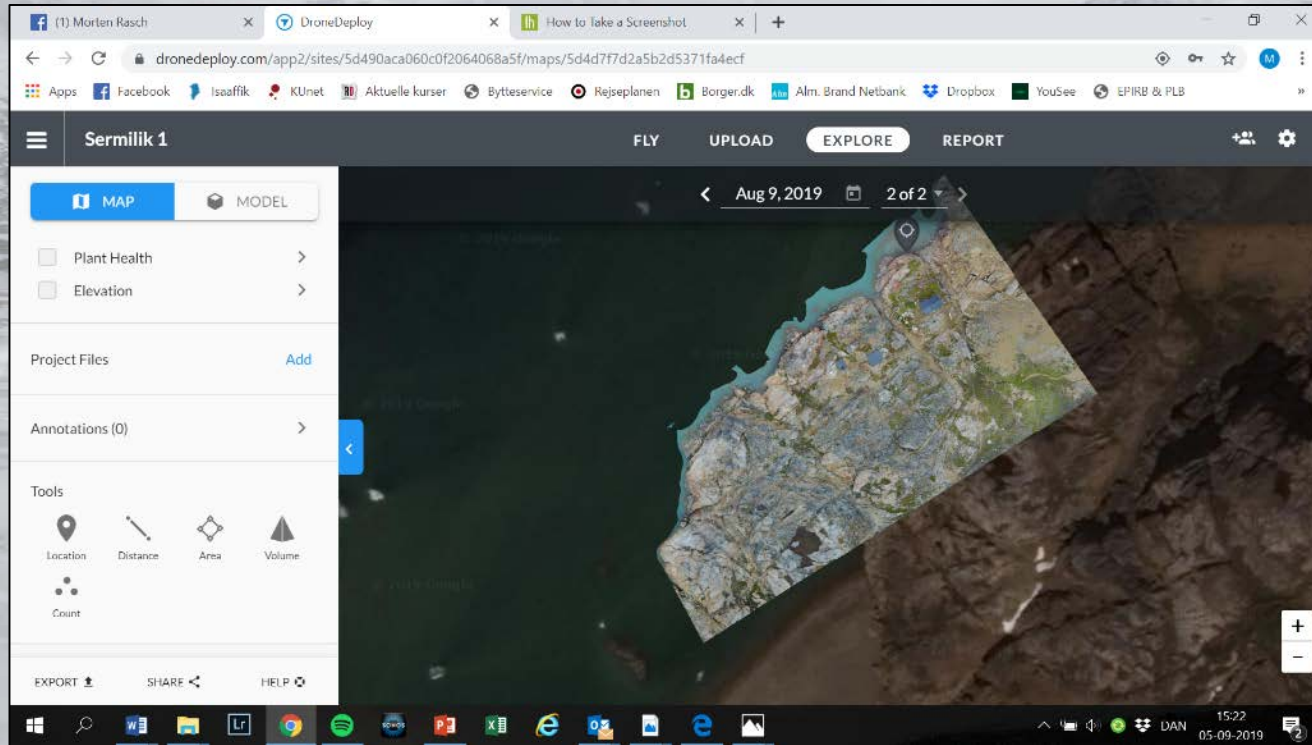
Precise mapping in the field



Precise mapping in the field

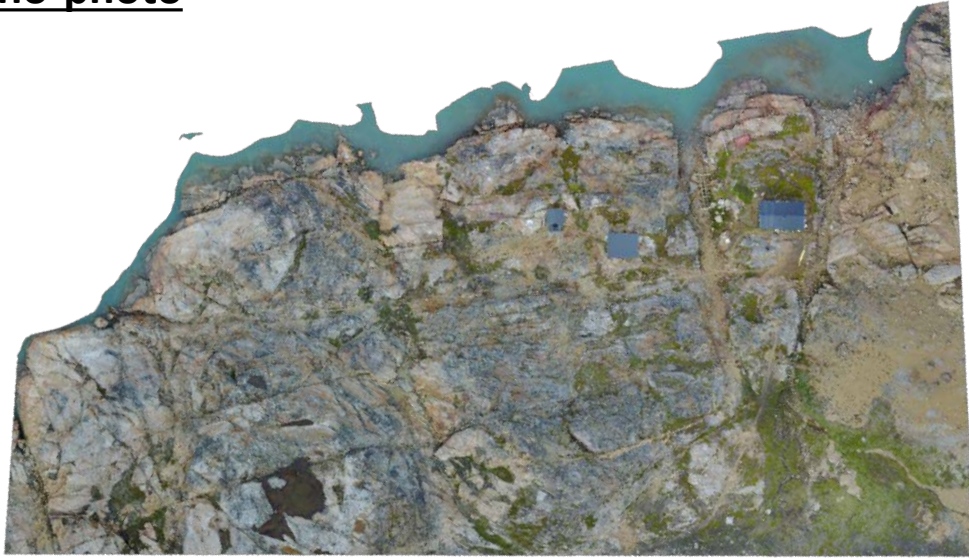


Precise mapping in the field



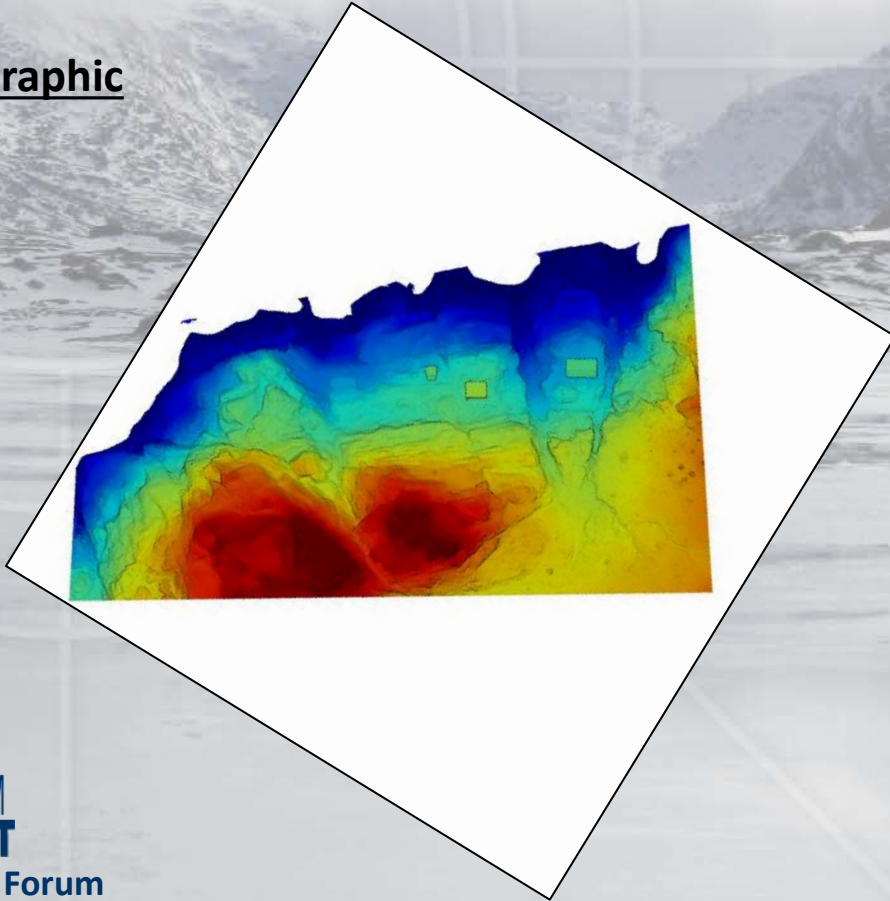
Precise mapping in the field

Ortho-photo



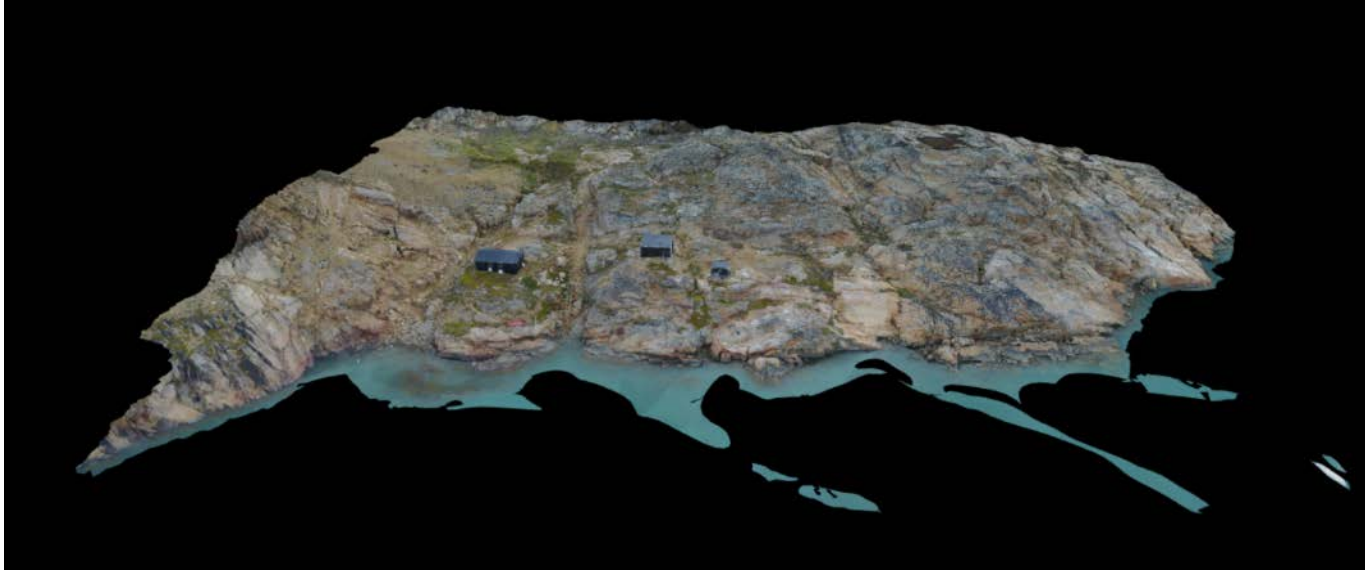
Precise mapping in the field

Topographic
map



Precise mapping in the field

3D-model





Station Managers'
Forum

Let's INTERACT

www.eu-interact.org



INTERACT II, Station Managers' Forum V, Svartberget, Sweden, 10-11 September 2019

