



Station Managers'  
Forum

By Morten Rasch and Wolfgang Schöner



## Sermilik Station, Southeast Greenland

[www.eu-interact.org](http://www.eu-interact.org)



INTERACT II, Station Managers' Forum V, Svartberget, Sweden, 10-11 September 2019



## Facts about the station:

### Location:

Sermilik Fjord, Southeast Greenland (65°40' N; 38°10'W).

### Owner and origin:

University of Copenhagen. The station was established in 1970.

### Climate and setting:

Low arctic, maritime climate in a relatively steep alpine landscape with easy access to a local glacier (Mittivakkat Glacier). Mean Annual Temperature is -1.7 °C

### Nearest town:

Tasiilaq (25 km from station, i.e. 1 day by foot, 2 hours by boat or ten minutes by helicopter) with 2,000 inhabitants. Accessible by aircraft from Reykjavik (Iceland) and Nuuk (Greenland).

### Capacity:

6-8 PAX. The station does not have a permanent staff. It has no laboratories but some office facilities in buildings. No sauna.

### Research and monitoring:

Glaciology, Hydrology, Glacial Geomorphology and Coastal Geomorphology. Due to the steepness of the landscape, heath and fen areas are very rare. The station has long time series on climate, hydrology and mass balance of local glacier.



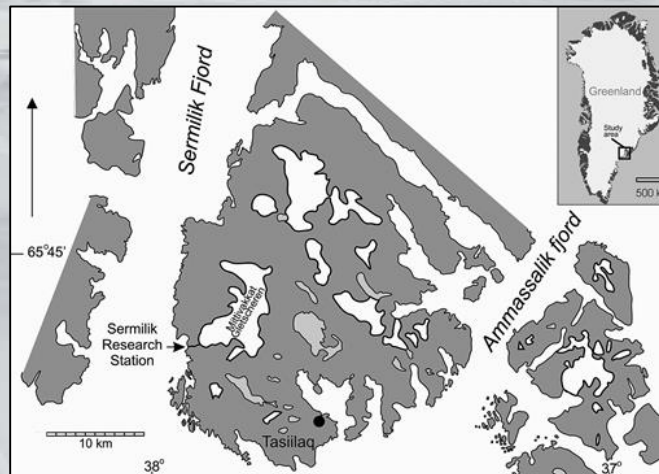


# Sermilik Station





# Sermilik Station



## Local Setting





# Local Community



Station Managers' Forum

Morten Rasch and Wolfgang Schöner: *Sermilik Station, Southeast Greenland.*

## Future perspective

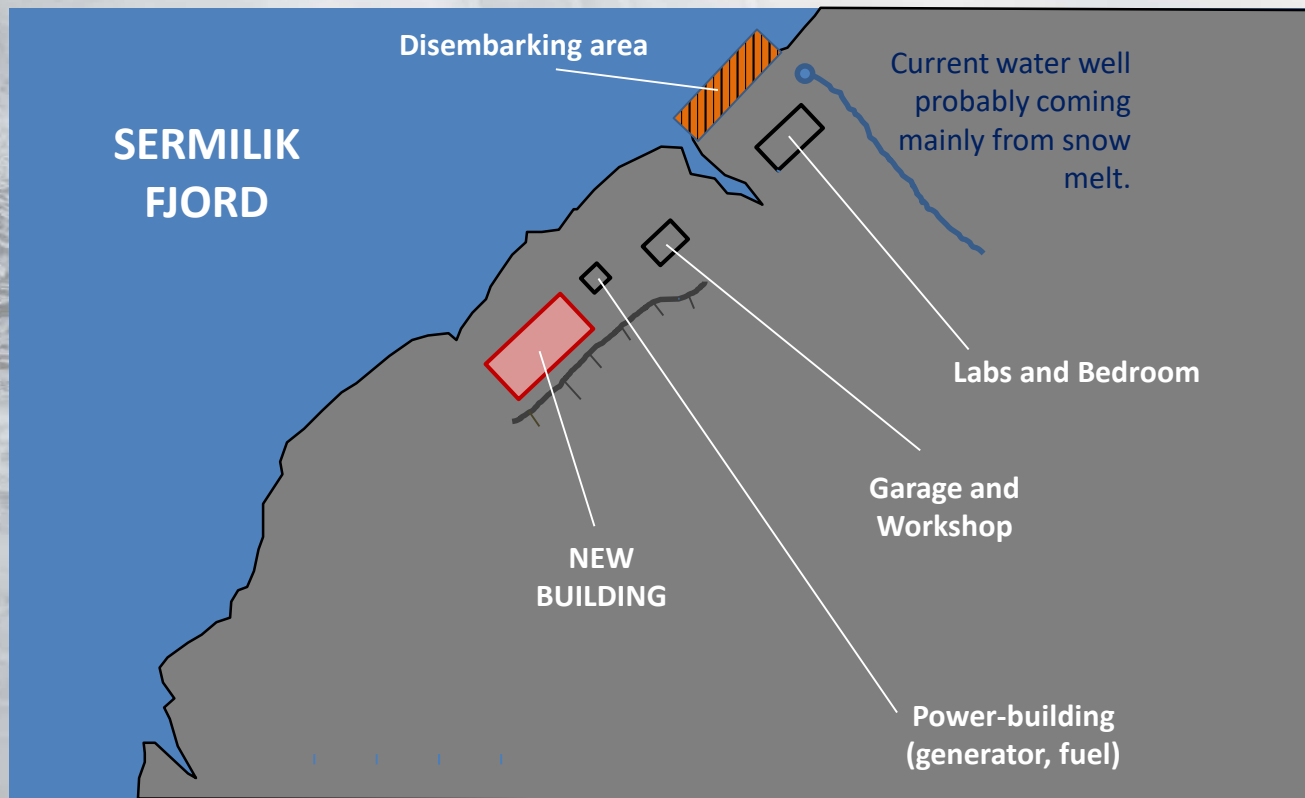


University of Graz, Austria, has expressed interest in taking over Sermilik Station, increase the capacity to c. 25 PAX, and develop it into also a marine and atmospheric research station. University of Graz participates in INTERACT with the Austrian research station Sonnblick Observatory.





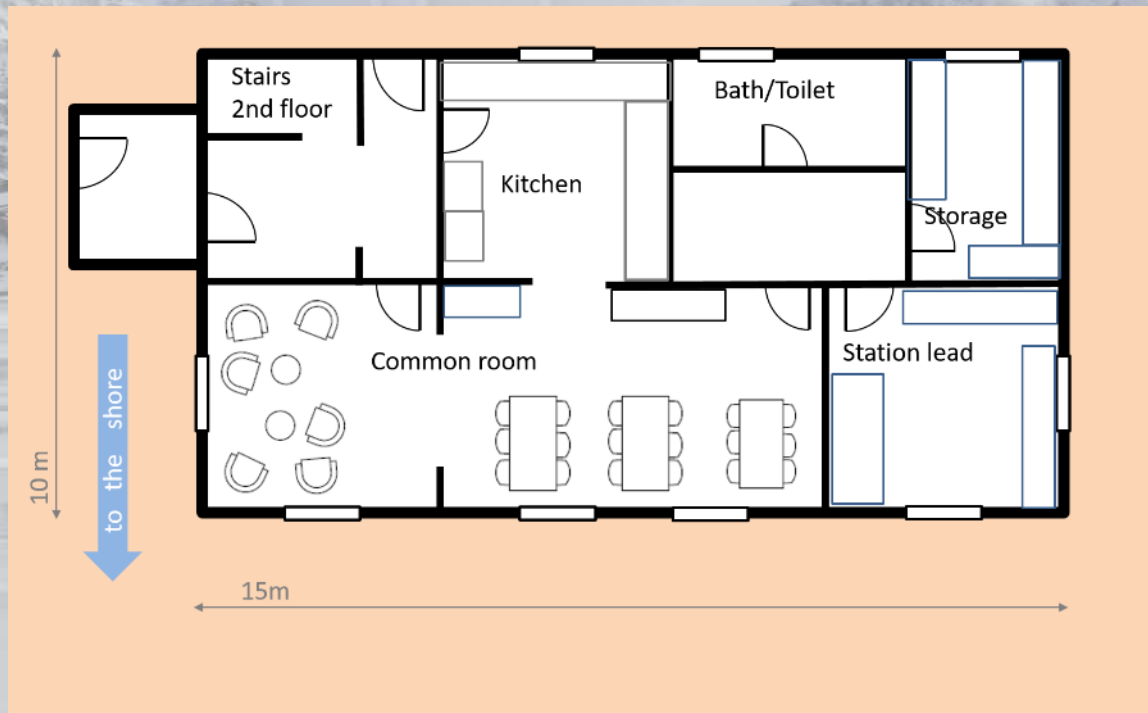
## Future perspective





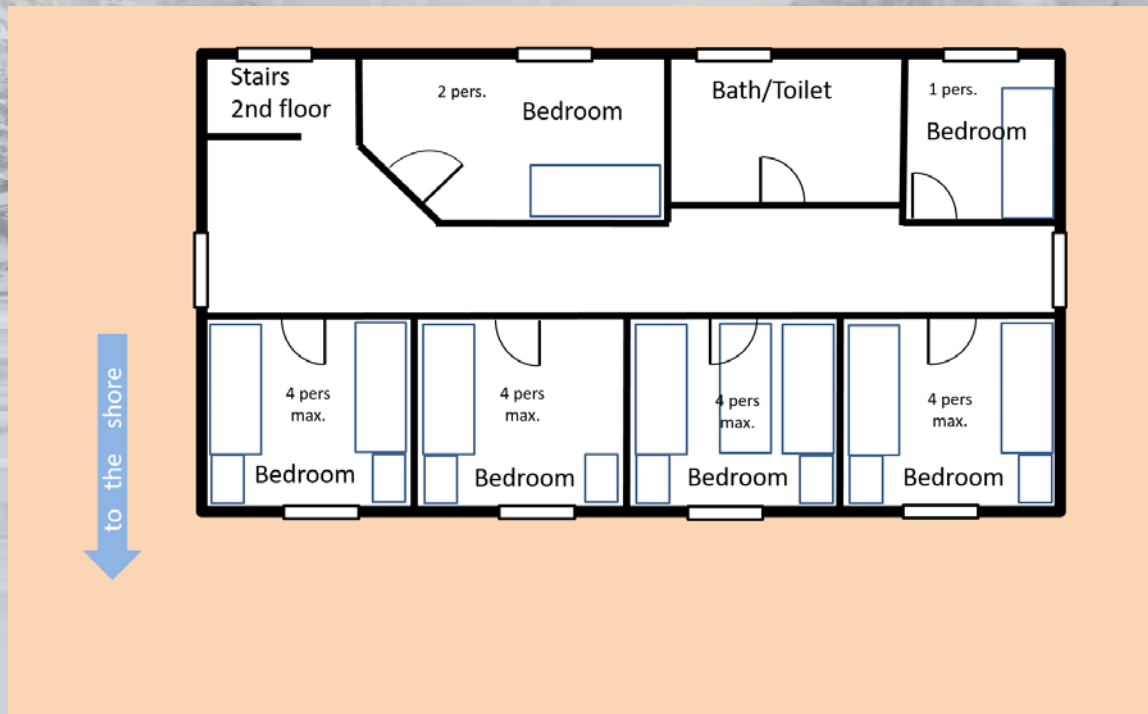
# Future perspective

## Ground level



# Future perspective

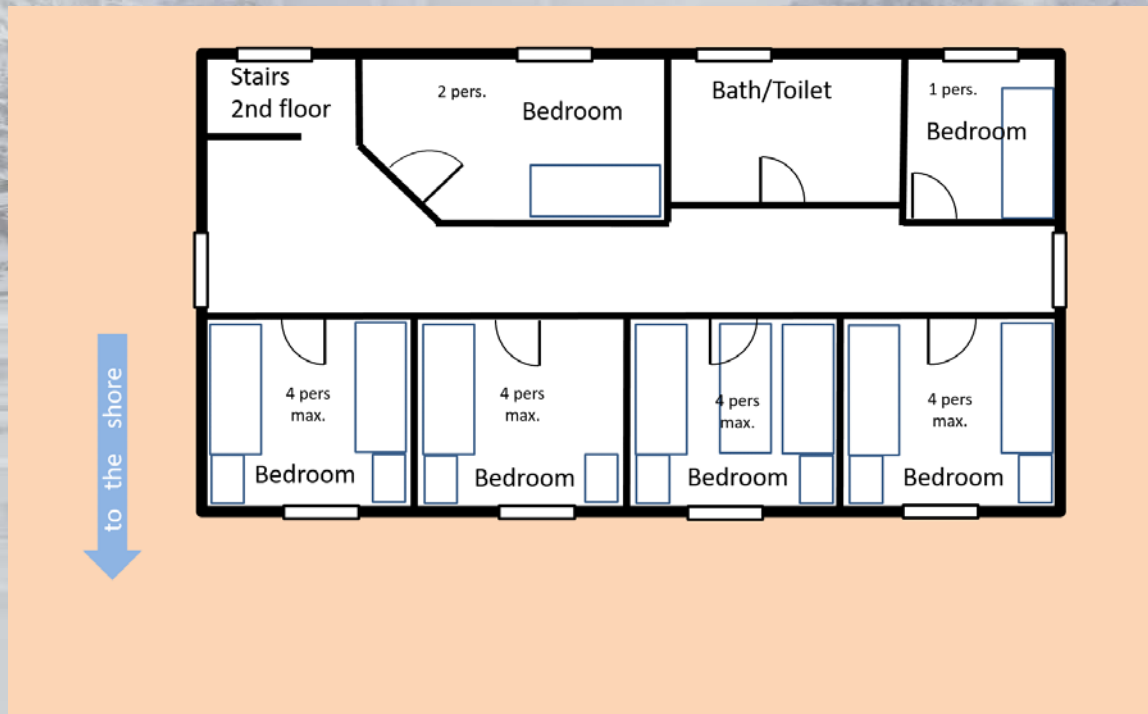
## First floor





# Future perspective

## First floor



## Facts about the station:

### Location:

Sermilik Fjord, Southeast Greenland (65°40' N; 38°10'W).

### Owner and origin:

**University of Graz, Austria.** The station was established in 1970. **Ownership was transferred to University of Graz in 2020.**

### Climate and setting:

Low arctic, maritime climate in a relatively steep alpine landscape with easy access to a local glacier (Mittivakkat Glacier).  
Mean Annual Temperature is -1.7 °C

### Nearest town:

Tasiilaq (25 km from station, i.e. 1 day by foot, 2 hours by boat or ten minutes by helicopter) with 2,000 inhabitants.  
Accessible by aircraft from Reykjavik (Iceland) and Nuuk (Greenland).

### Capacity:

**25 PAX.** Laboratories for marine, atmospheric and terrestrial research. Maybe a sauna.

### Research and monitoring:

Glaciology, Hydrology, Glacial Geomorphology and Coastal Geomorphology, **Marine Ecosystems, Atmospheric Research.**  
Due to the steepness of the landscape, heath and fen areas are very rare. The station has long time series on climate, hydrology and mass balance of local glacier.







Station Managers'  
Forum

Let's INTERACT

[www.eu-interact.org](http://www.eu-interact.org)



INTERACT II, Station Managers' Forum V, Svartberget, Sweden, 10-11 September 2019

