

WP 7: Improving Harmonizing Biodiversity Monitoring

October 21. 2017 INTERACTH2020 Annual meeting



Kári Fannar Lárusson (kari@caff.is)
Jónína Sigríður Þorláksdóttir (jonina@rifresearch.is)



Presentation topics;

- *Background to CAFF/CBMP*
- *WP7 Goals and objectives*
- *The Rif field station*
- *Rif workshop*
- *Arctic Biodiversity Data Service*
- *Arctic Biodiversity Congress 2018*



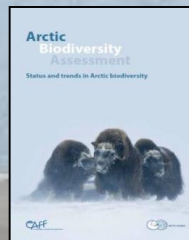
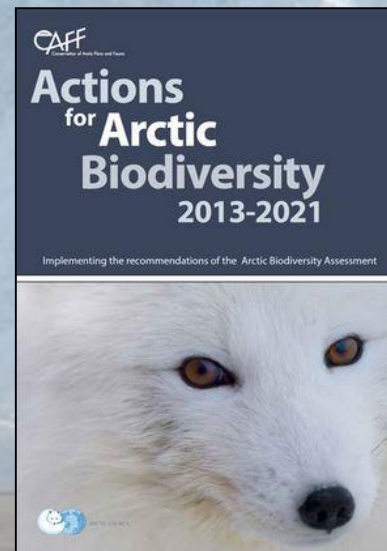
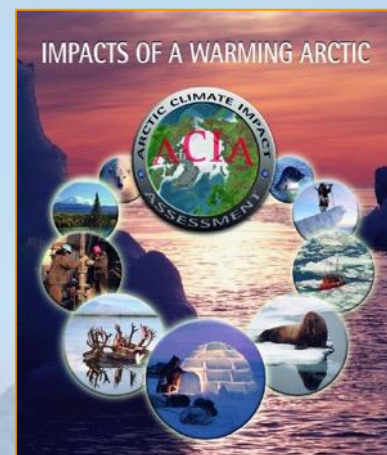
CIRCUMPOLAR BIODIVERSITY MONITORING PROGRAM

- Conservation of Arctic Flora and Fauna (CAFF) biodiversity Working Group of the Arctic Council
- Mandate:
 - to address the conservation of Arctic biodiversity, and to communicate its findings to the governments and residents of the Arctic, helping to promote practices which ensure the sustainability of the Arctic's living resources
- Monitoring, assessment, data management, communication
- CAFF operates on the boundary between science and policy



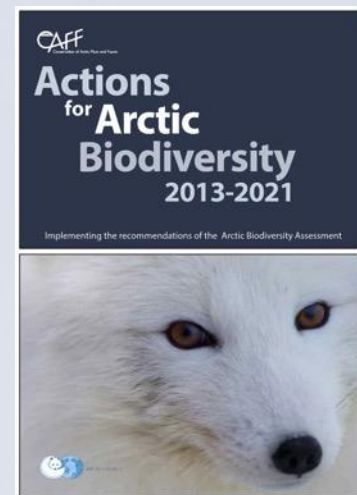
CIRCUMPOLAR BIODIVERSITY MONITORING PROGRAM

- CAFF's /Arctic Councils biodiversity monitoring programme
- Started as response to Arctic Council recommendations on biodiversity and ecosystem monitoring (ACIA).
- Now also a tool for CAFF to implement ABA Action Plan.
- Focal point for current and credible Arctic biodiversity information



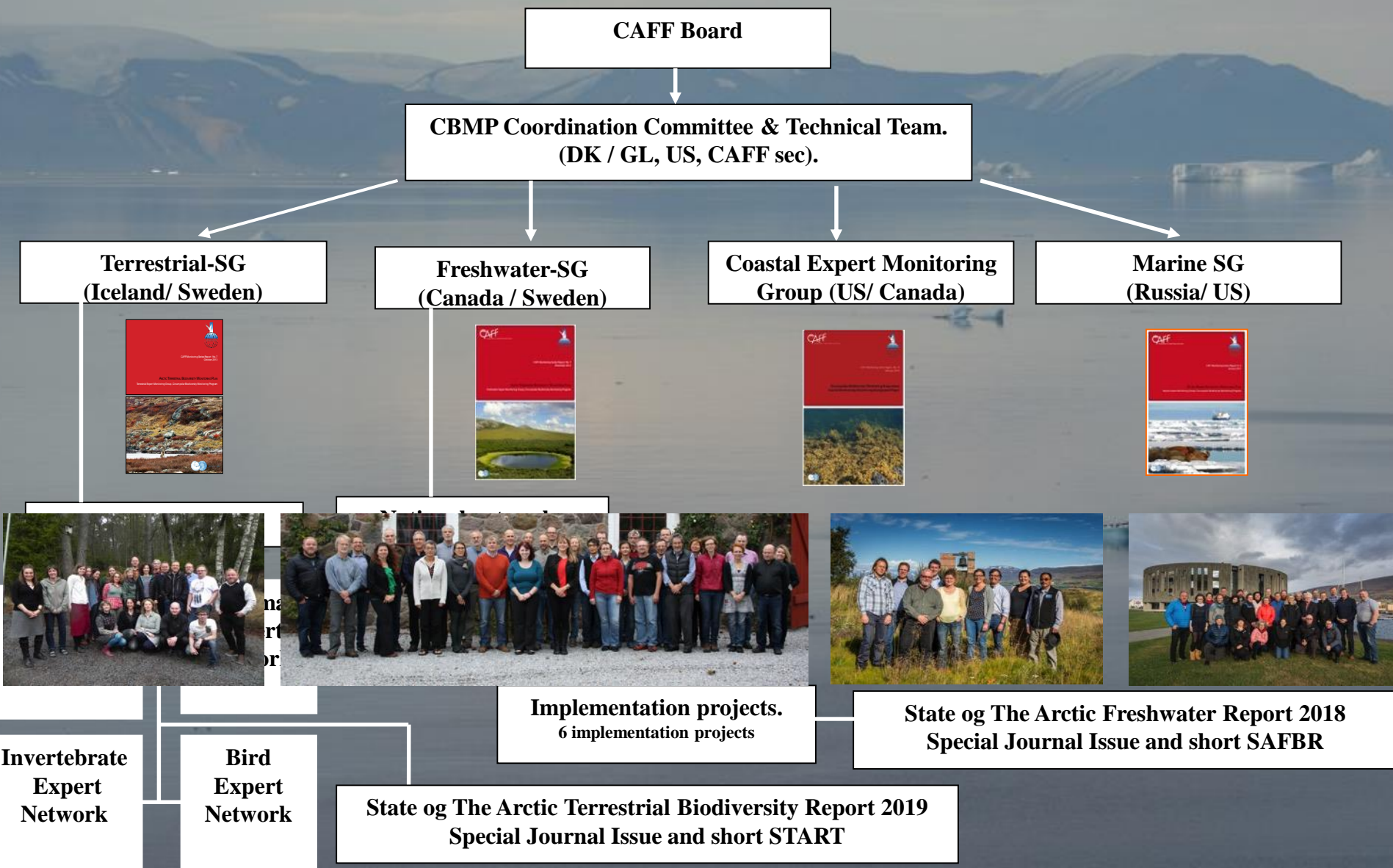
19 actions in ABA tracking tool regard CBMP, including:

- Continue implementation of CBMP (All Rec's)
- Review, evaluate, and update CBMP strategies and its monitoring plans (All Rec's)
- Report on changes in Arctic species, ecosystems, and the effects of stressors through SABR's (Rec 13)
- Consider impacts of stressors and drivers within the scheduled reviews of the CBMP monitoring plans (Rec 16).
- Next CAFF Biodiversity Congress in 2018: CBMP as an important contributor (All Rec's)

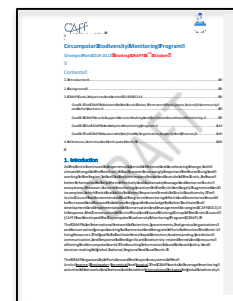
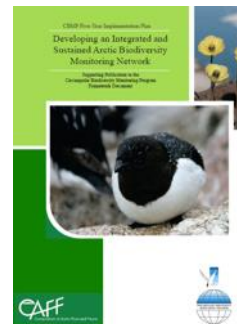
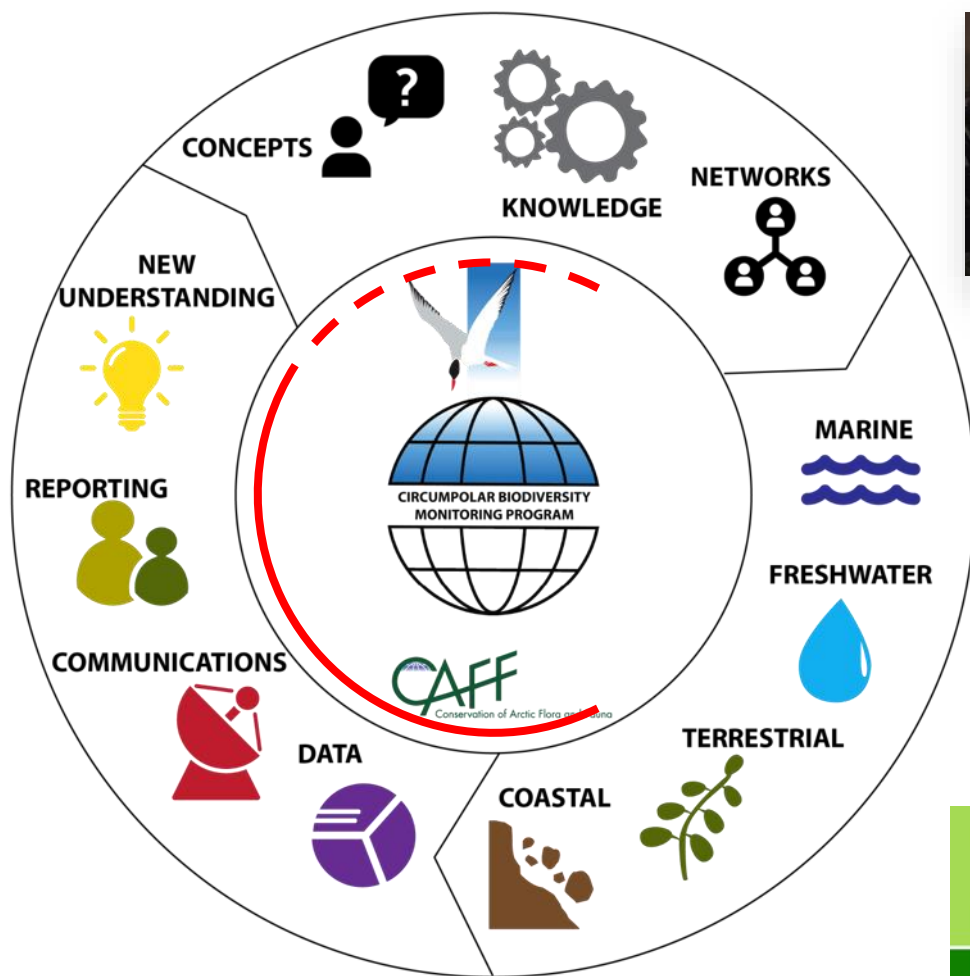


- International network of networks improving detection, understanding, reporting on Arctic biodiversity trends.
- Three CBMP Adaptive and Ecosystem Based Monitoring Plans and four Steering Groups;
 - 1. Marine**
 - 2. Freshwater**
 - 3. Terrestrial**
 - 4. Coastal Plan** on its way
- Four year Strategic Plan (2018-2021 plan in development)
- State of The Arctic Biodiversity Reports are major outputs from CBMP.
- Indices and Indicators



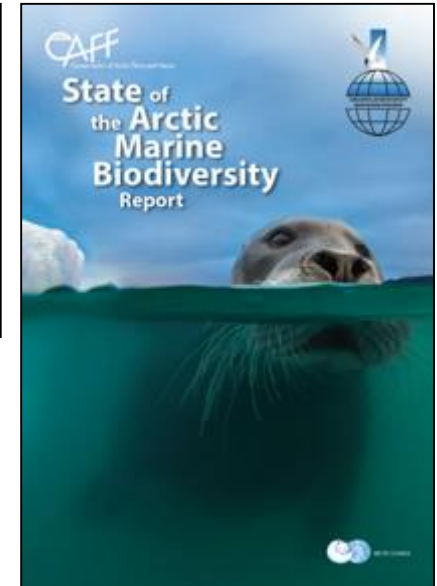
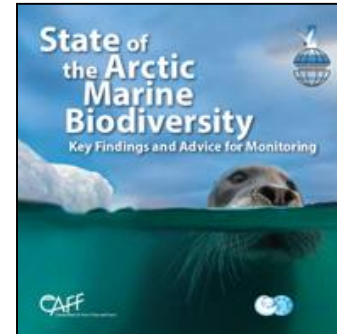


CIRCUMPOLAR BIODIVERSITY MONITORING PROGRAM



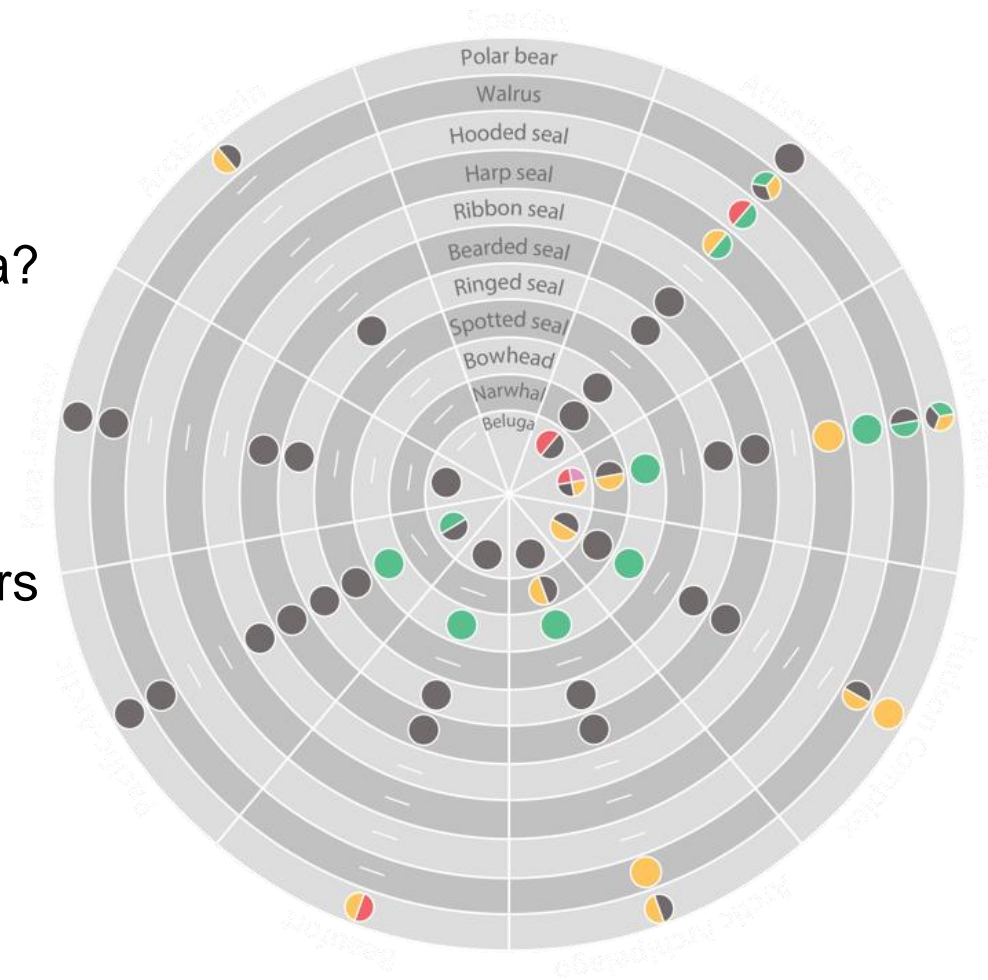
CIRCUMPOLAR BIODIVERSITY MONITORING PROGRAM

- What can we say on changes occurring in Arctic biodiversity and ecosystems based on current data?
- Identify knowledge gaps
- Provide key trends
- Advice for monitoring, directed towards policy and decision makers
- Process; lessons learned



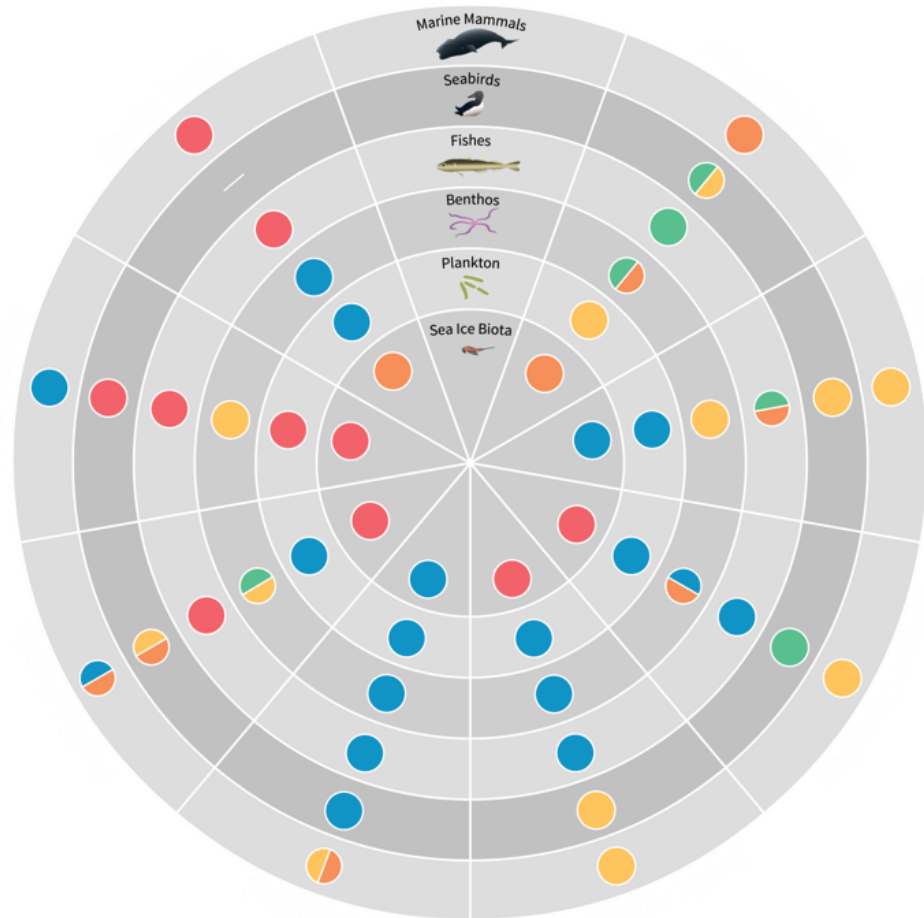
CIRCUMPOLAR BIODIVERSITY MONITORING PROGRAM

- What can we say on changes occurring in Arctic biodiversity and ecosystems based on current data?
- Identify knowledge gaps
- Provide key trends
- Advice for monitoring, directed towards policy and decision makers
- Process; lessons learned



CIRCUMPOLAR BIODIVERSITY MONITORING PROGRAM

- What can we say on changes occurring in Arctic biodiversity and ecosystems based on current data?
- Identify knowledge gaps
- Provide key trends
- Advice for monitoring, directed towards policy and decision makers
- Process; lessons learned



WP7: Overall goal

Test the CBMP Freshwater and Terrestrial monitoring plans at INTERACT stations

WP7: Members

CAFF
Rif Field Station
Aarhus University
Zackenbug Research Station
CHARS Research Station

WP7 Objectives

- Establish interface between CBMP and INTERACT
- Inform development of Rif Field Station in Iceland based on lessons learnt at Zackenberg and CHARS
- Test CBMP Freshwater and Terrestrial Monitoring Plans at Rif and develop a user manual for implementation
- Identify how data from INTERACT stations can inform Arctic Council initiatives
- Up-dated publication on Arctic terrestrial biodiversity for the Encyclopedia of Biodiversity



CBMP plans to be used in WP7

1. *Marine*
2. *Freshwater*
3. *Terrestrial*
4. *Coastal (on it's way)*

***Focus on existing monitoring capacity,
existing data***



- **Establish advisory group**
 - 3 Station Managers/ scientific leaders
 - CBMP leads from terrestrial and freshwater group
 - Relevant country CBMP SG members
 - CAFF secretariat
 - CBMP Co-Chair
 - Annual meeting + teleconferences
- Guide and advise 3 INTERACT field stations in implementation of CBMP Monitoring Plan
- First meeting at Rif August 22-24, 2017

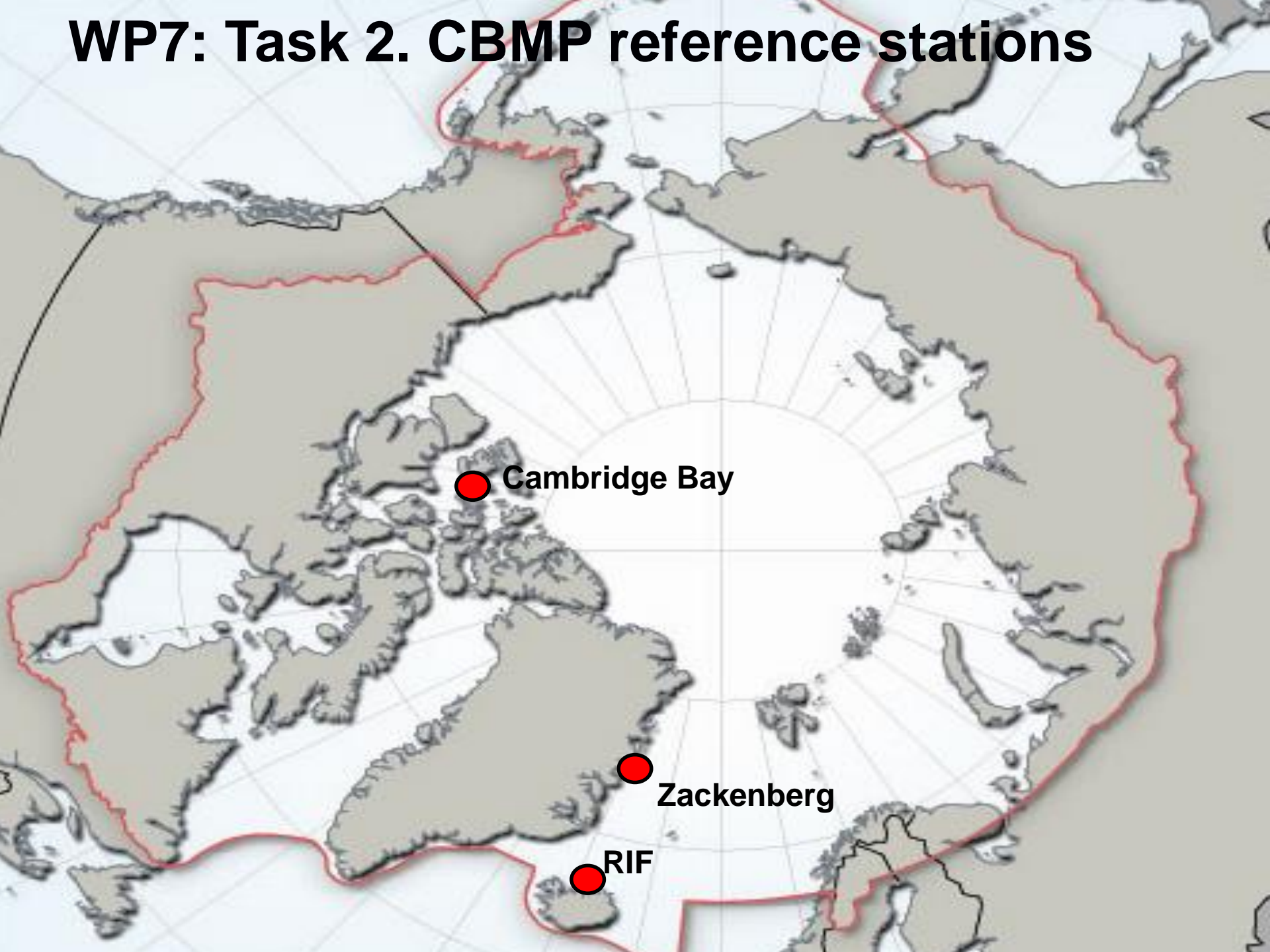


WP7: Task 2

- ***Develop three CBMP reference stations:***
 - Test the Freshwater & Terrestrial Monitoring Plans in the field
 - Identify existing biotic and abiotic monitoring
 - Identify monitoring gaps
 - Conduct field trials on selected FECs
 - Develop a data management plan for the Rif station
 - Develop a user manual for implementing CBMP at INTERACT stations



WP7: Task 2. CBMP reference stations



WP7: Task 3

- Identify pathways: Data from INTERACT stations to Arctic Council assessments.
- Coordinate with WP 2 and build on the data flow systems created under WP 5
- Identify and present relevant Arctic Biodiversity Assessment and ICARP III recommendations



WP7: Products

- A data management plan for the Rif station
- A user manual for implementing CBMP at INTERACT stations
- Describe the flow of data from the field to Arctic Council assessments, monitoring and reporting activities

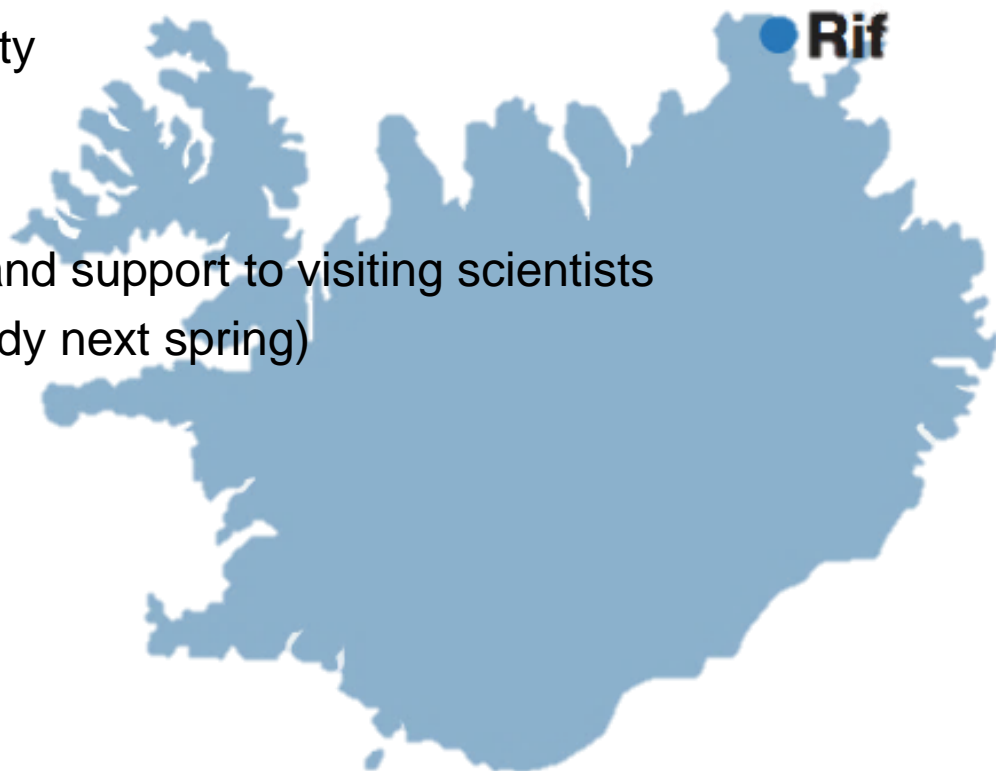


Rif Field Station

CIRCUMPOLAR BIODIVERSITY MONITORING PROGRAM



- Established in 2014 with the goal of:
 - Promoting and enhancing ecological research and monitoring in the area
 - Help gather, manage and share information gained through research and monitoring
 - Supporting the local community
- Operation so far
 - Accommodation, assistance and support to visiting scientists
 - Simple research facilities (ready next spring)
 - Educational programs



Environmental conditions

- Melrakkaslétta peninsula classified as Low Arctic (Panarctic Flora Checklist, 2011) → Characterized by plants of Arctic origin
- Open and exposed to cold, northerly winds
- High humidity and low summer temperatures



Freshwater

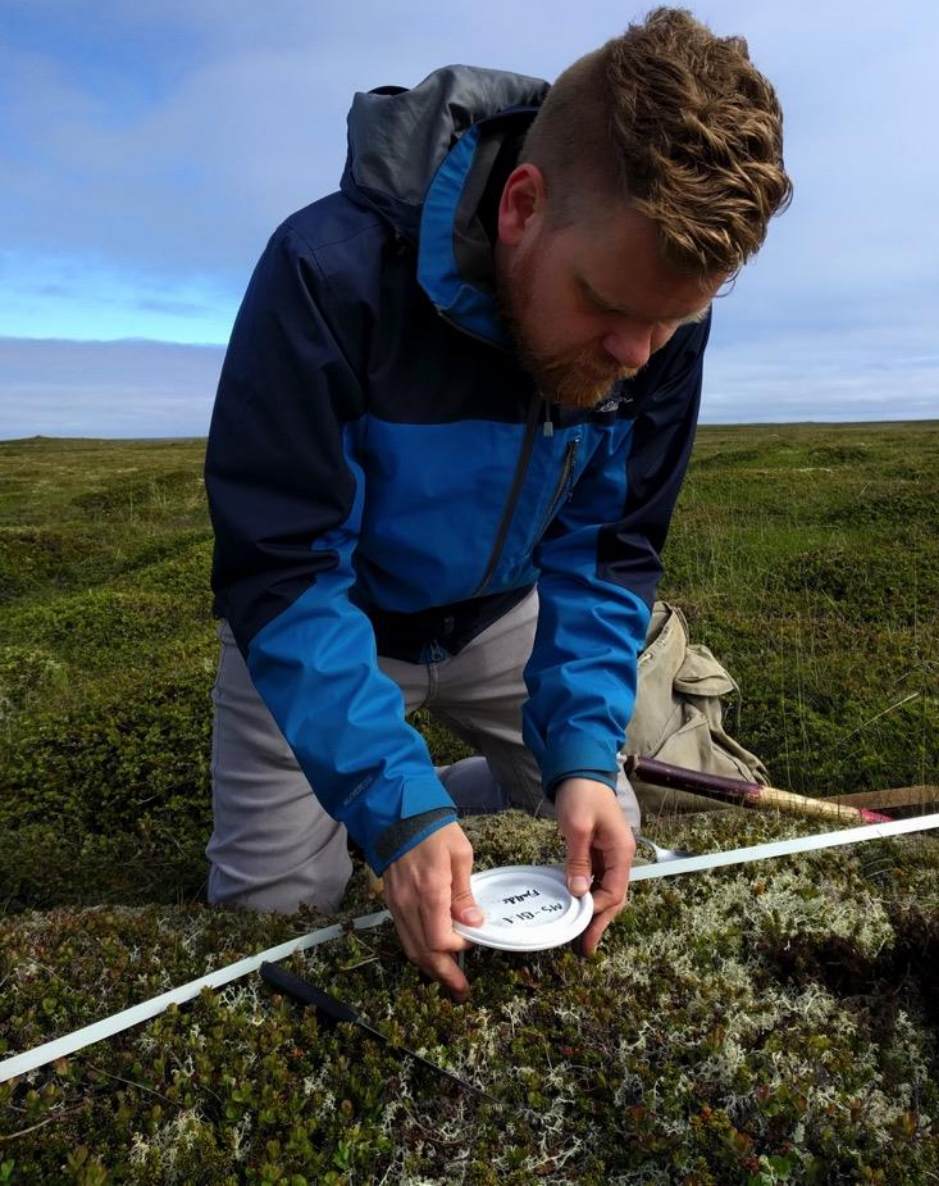


Important bird area

- 53 nesting species – 47 regularly
- Rich feeding grounds for migrating birds

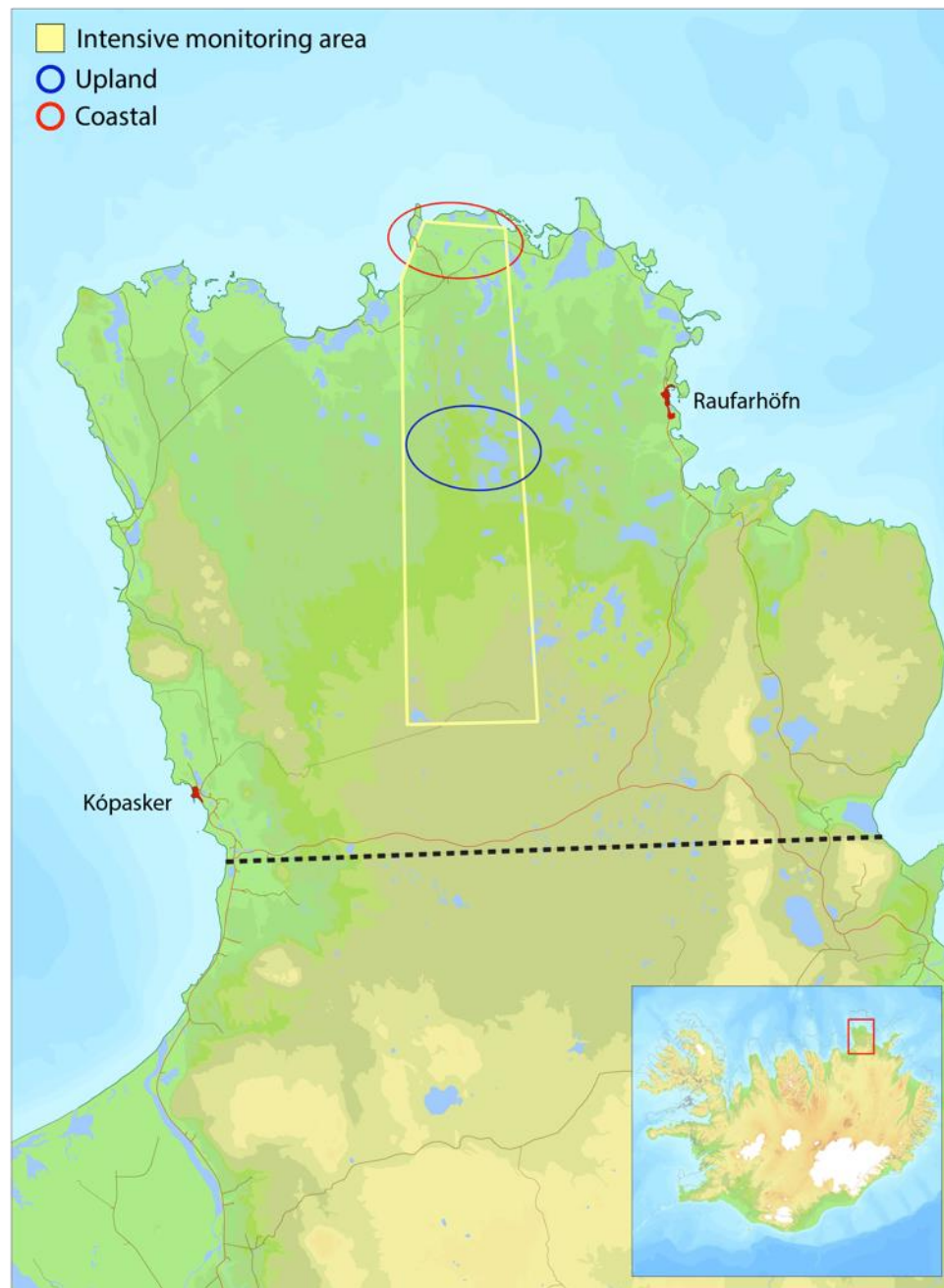


Arthropods?



WP 7 Rif Workshop outcomes

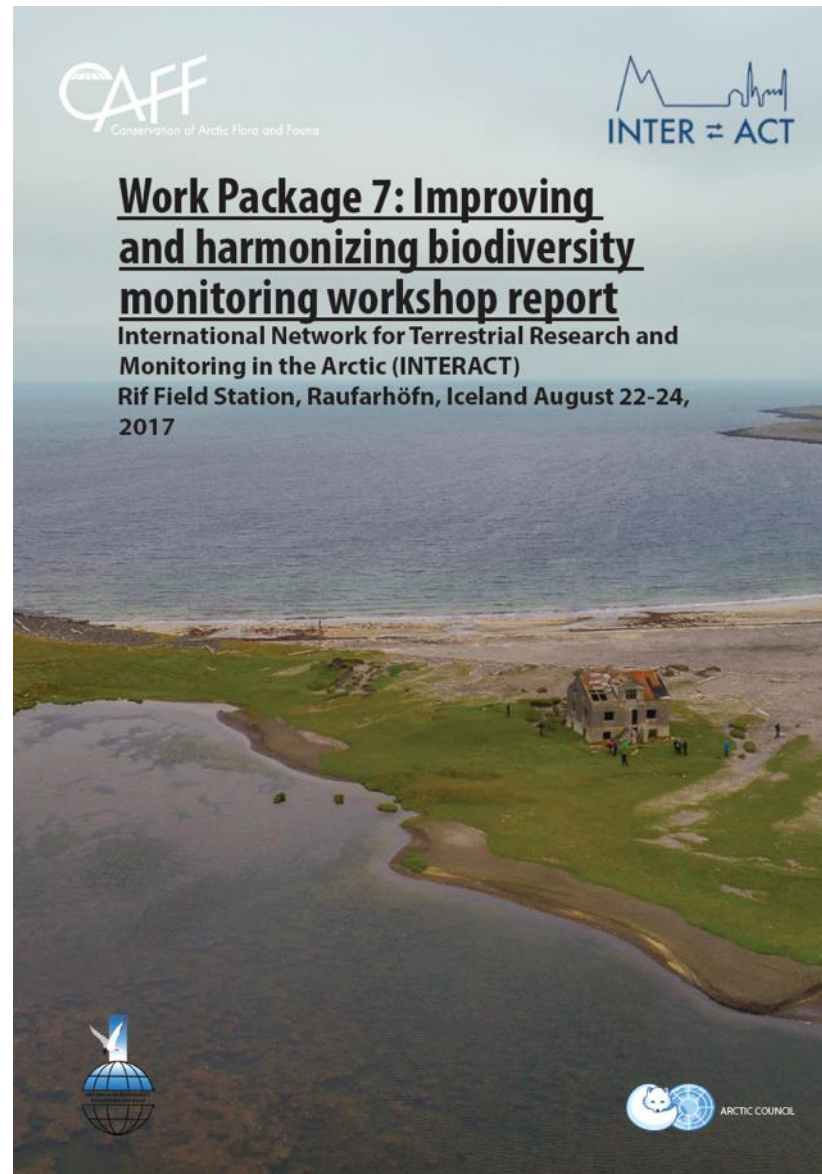
- Existing biotic and abiotic monitoring at the three stations identified
- (Draft) monitoring plans for each station reviewed
- Guidance and assistance to Rif on FECs to monitor
- Identification of FECs to be addressed at each station
- Approach for data management explored
- Assignment of tasks
- Timeline



WP7 Milestones

- Melrakkaslétta peninsula defined as the Rif monitoring area ✓
- List of selected FECs proposed in draft monitoring plan. ✓
- Project website, and release workshop report ✓
- Lessons learnt from CHARS and Zackenberg documented ✓
- Finalize the Rif monitoring plan
- Develop a mapping database for Rif
- Overview document for WP7
- Construct a data management plan
- Communications plan and long term business plan

CIRCUMPOLAR BIODIVERSITY MONITORING PROGRAM



WP7 timeline for next steps

CIRCUMPOLAR BIODIVERSITY MONITORING PROGRAM

	2017		2018					
	Nov	Dec	Jan	Feb	March	June	July	Aug
Overview document								
Monitoring plan (Rif)								
Data management plan								
Communications plan								
Business plan								

Next meetings

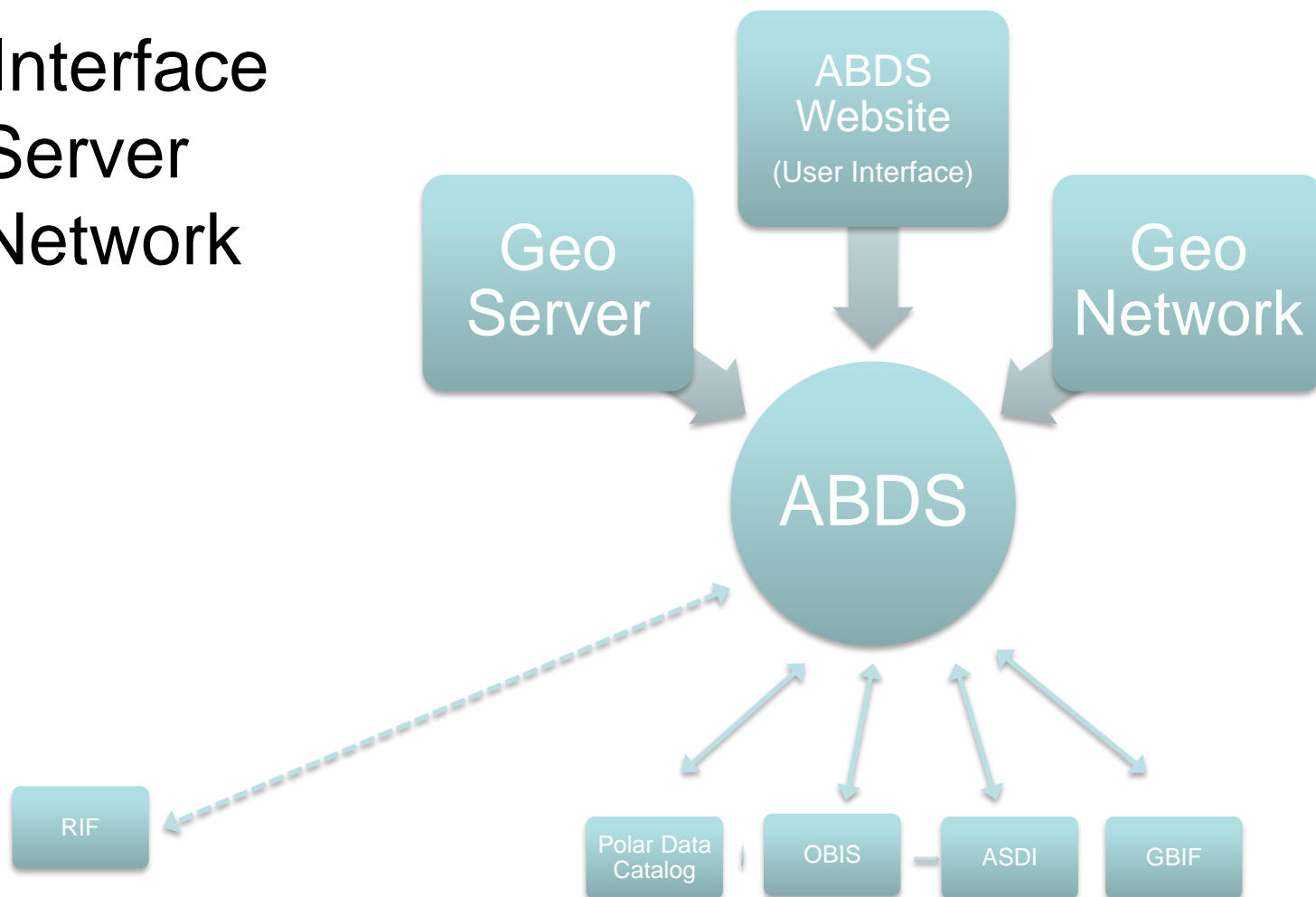
- Regular teleconferences: 1st in early Nov
- Annual workshop: August 2018 (Cambridge bay or Denmark)
- WP meeting at the Arctic Biodiversity Congress
Rovaniemi, Finland: October 12th 2017
- Annual workshop: August 2019 in Raufarhöfn, Iceland





CIRCUMPOLAR BIODIVERSITY MONITORING PROGRAM

- Web Interface
- Geo Server
- Geo Network



CIRCUMPOLAR BIODIVERSITY MONITORING PROGRAM

- CAFF will be hosting The 2nd Arctic Biodiversity Congress:
October 9-11, 2018 Rovaniemi, Finland
- Call for content in November
- Consider to having an Interact session



CIRCUMPOLAR BIODIVERSITY MONITORING PROGRAM

Thank you!!

